

CD52 Antibody

Rabbit mAb

Catalog # AP91852

Product Information

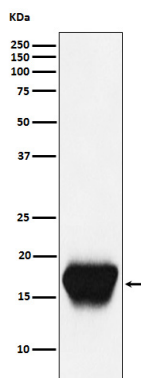
Application	WB, IP
Primary Accession	Q64389(mouse)(human: P31358)
Reactivity	Mouse
Clonality	Monoclonal
Other Names	CAMPATH 1; CD52; CDw52; He5;
Isotype	Rabbit IgG
Host	Rabbit
Calculated MW	8 KDa

Additional Information

Dilution	WB 1:500~1:2000 IP 1:50
Purification	Affinity-chromatography
Immunogen	A synthesized peptide derived from human CD52
Description	May play a role in carrying and orienting carbohydrate, as well as having a more specific role.
Storage Condition and Buffer	Rabbit IgG in phosphate buffered saline , pH 7.4, 150mM NaCl, 0.02% sodium azide and 50% glycerol. Store at +4°C short term. Store at -20°C long term. Avoid freeze / thaw cycle.

Protein Information

Images



Western blot analysis of CD52 expression in Mouse spleen cell lysate.