

C4 binding protein Antibody

Rabbit mAb

Catalog # AP91817

Product Information

Application	WB, IHC, IF, ICC, IP, IHF
Primary Accession	P20851
Reactivity	Rat, Human
Clonality	Monoclonal
Other Names	C4BP; C4BPB; PRP;
Isotype	Rabbit IgG
Host	Rabbit
Calculated MW	28357

Additional Information

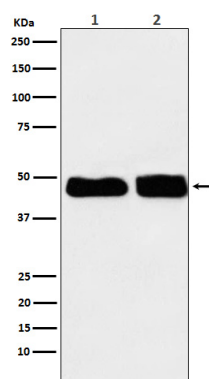
Dilution	WB 1:500~1:1000 IHC 1:100~1:500 ICC/IF 1:50~1:200 IP 1:60
Purification	Affinity-chromatography
Immunogen	A synthesized peptide derived from human C4 binding protein
Description	Controls the classical pathway of complement activation. It binds as a cofactor to C3b/C4b inactivator (C3bINA), which then hydrolyzes the complement fragment C4b.
Storage Condition and Buffer	Rabbit IgG in phosphate buffered saline , pH 7.4, 150mM NaCl, 0.02% sodium azide and 50% glycerol. Store at +4°C short term. Store at -20°C long term. Avoid freeze / thaw cycle.

Protein Information

Name	C4BPB
Function	Controls the classical pathway of complement activation. It binds as a cofactor to C3b/C4b inactivator (C3bINA), which then hydrolyzes the complement fragment C4b. It also accelerates the degradation of the C4bC2a complex (C3 convertase) by dissociating the complement fragment C2a. It also interacts with anticoagulant protein S and with serum amyloid P component. The beta chain binds protein S.
Cellular Location	Secreted.

Images

Western blot analysis of C4 binding protein expression in
(1) Human plasma lysate; (2) Rat plasma lysate.



Please note: All products are 'FOR RESEARCH USE ONLY. NOT FOR USE IN DIAGNOSTIC OR THERAPEUTIC PROCEDURES'.