

NDUFB8 Antibody

Rabbit mAb

Catalog # AP91807

Product Information

Application	WB, IHC, IF, FC, ICC, IP, IHF
Primary Accession	O95169
Reactivity	Rat, Human, Mouse
Clonality	Monoclonal
Other Names	ASHI; CI-ASHI; NDUFB8;
Isotype	Rabbit IgG
Host	Rabbit
Calculated MW	21766

Additional Information

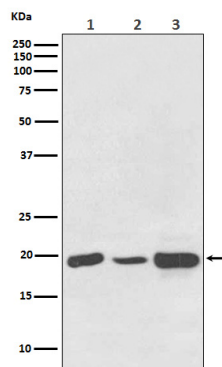
Dilution	WB 1:500~1:2000 IHC 1:50~1:200 ICC/IF 1:50~1:200 IP 1:30 FC 1:50
Purification	Affinity-chromatography
Immunogen	A synthesized peptide derived from human NDUFB8
Description	Accessory subunit of the mitochondrial membrane respiratory chain NADH dehydrogenase (Complex I), that is believed not to be involved in catalysis. Complex I functions in the transfer of electrons from NADH to the respiratory chain. The immediate electron acceptor for the enzyme is believed to be ubiquinone.
Storage Condition and Buffer	Rabbit IgG in phosphate buffered saline , pH 7.4, 150mM NaCl, 0.02% sodium azide and 50% glycerol. Store at +4°C short term. Store at -20°C long term. Avoid freeze / thaw cycle.

Protein Information

Name	NDUFB8
Function	Accessory subunit of the mitochondrial membrane respiratory chain NADH dehydrogenase (Complex I), that is believed not to be involved in catalysis. Complex I functions in the transfer of electrons from NADH to the respiratory chain. The immediate electron acceptor for the enzyme is believed to be ubiquinone.
Cellular Location	Mitochondrion inner membrane; Single-pass membrane protein; Matrix side

Images

Western blot analysis of NDUFB8 expression in (1) HeLa cell lysate; (2) NIH/3T3 cell lysate; (3) PC12 cell lysate.



Please note: All products are 'FOR RESEARCH USE ONLY. NOT FOR USE IN DIAGNOSTIC OR THERAPEUTIC PROCEDURES'.