

# Alkaline phosphatase Antibody

Rabbit mAb

Catalog # AP91789

## Product Information

---

<b>Application</b>	WB, IHC
<b>Primary Accession</b>	<a href="#">P09923</a>
<b>Reactivity</b>	Human
<b>Clonality</b>	Monoclonal
<b>Other Names</b>	Alpi; Glycerophosphatase; IAP;
<b>Isotype</b>	Rabbit IgG
<b>Host</b>	Rabbit
<b>Calculated MW</b>	56812

## Additional Information

---

<b>Dilution</b>	WB 1:500~1:2000 IHC 1:50~1:200
<b>Purification</b>	Affinity-chromatography
<b>Immunogen</b>	A synthesized peptide derived from human intestinal alkaline phosphatase
<b>Description</b>	In most mammals there are four different isozymes: placental, placental-like, intestinal and tissue non-specific (liver/bone/kidney).
<b>Storage Condition and Buffer</b>	Rabbit IgG in phosphate buffered saline , pH 7.4, 150mM NaCl, 0.02% sodium azide and 50% glycerol. Store at +4°C short term. Store at -20°C long term. Avoid freeze / thaw cycle.

## Protein Information

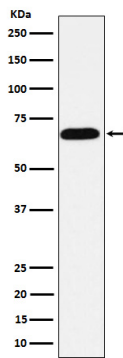
---

<b>Name</b>	ALPI
<b>Function</b>	Alkaline phosphatase that can hydrolyze various phosphate compounds.
<b>Cellular Location</b>	Cell membrane {ECO:0000250 UniProtKB:P15693}; Lipid-anchor, GPI-anchor {ECO:0000250 UniProtKB:P15693}

## Images

---

Western blot analysis of intestinal alkaline phosphatase expression in HeLa cell lysate.



Please note: All products are 'FOR RESEARCH USE ONLY. NOT FOR USE IN DIAGNOSTIC OR THERAPEUTIC PROCEDURES'.