

PHOX2B Antibody

Rabbit mAb

Catalog # AP91774

Product Information

Application	WB, IHC, IF, ICC, IHF
Primary Accession	Q99453
Reactivity	Human, Mouse
Clonality	Monoclonal
Other Names	NBLST2; NBPhox; PHOX 2B; PHOX2B; PMX 2B; PMX2B;
Isotype	Rabbit IgG
Host	Rabbit
Calculated MW	31621

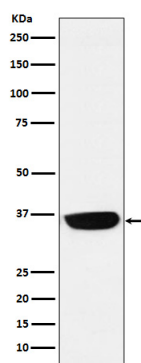
Additional Information

Dilution	WB 1:500~1:2000 IHC 1:100~1:500 ICC/IF 1:50~1:200
Purification	Affinity-chromatography
Immunogen	A synthesized peptide derived from human PHOX2B
Description	Involved in the development of several major noradrenergic neuron populations, including the locus coeruleus. Transcription factor which could determine a neurotransmitter phenotype in vertebrates. Enhances second-messenger-mediated activation of the dopamine beta-hydrolase and c-fos promoters, and of several enhancers including cAMP-response element and serum-response element.
Storage Condition and Buffer	Rabbit IgG in phosphate buffered saline , pH 7.4, 150mM NaCl, 0.02% sodium azide and 50% glycerol. Store at +4°C short term. Store at -20°C long term. Avoid freeze / thaw cycle.

Protein Information

Name	PHOX2B
Synonyms	PMX2B
Function	Involved in the development of several major noradrenergic neuron populations, including the locus coeruleus. Transcription factor which could determine a neurotransmitter phenotype in vertebrates. Enhances second-messenger-mediated activation of the dopamine beta- hydrolase and c-fos promoters, and of several enhancers including cAMP- response element and serum-response element.
Cellular Location	Nucleus {ECO:0000255 PROSITE-ProRule:PRU00108}.
Tissue Location	Expressed in neuroblastoma, brain and adrenal gland

Images



Western blot analysis of PHOX2B expression in Neuro-2a cell lysate.

Please note: All products are 'FOR RESEARCH USE ONLY. NOT FOR USE IN DIAGNOSTIC OR THERAPEUTIC PROCEDURES'.