

Band 3 / CD233 Antibody

Rabbit mAb

Catalog # AP91771

Product Information

Application	WB, IHC, IF, ICC, IHF
Primary Accession	P02730
Reactivity	Human
Clonality	Monoclonal
Other Names	AE1; BND3; CD233; DI; EMPB3; EPB3; FR; RTA1A; SLC4A1; SW; WD; WD1; WR;
Isotype	Rabbit IgG
Host	Rabbit
Calculated MW	101792

Additional Information

Dilution	WB 1:500~1:2000 IHC 1:50~1:200 ICC/IF 1:50~1:200
Purification	Affinity-chromatography
Immunogen	A synthesized peptide derived from human Band 3 / CD233
Description	Functions both as a transporter that mediates electroneutral anion exchange across the cell membrane and as a structural protein. Major integral membrane glycoprotein of the erythrocyte membrane; required for normal flexibility and stability of the erythrocyte membrane and for normal erythrocyte shape via the interactions of its cytoplasmic domain with cytoskeletal proteins, glycolytic enzymes, and hemoglobin.
Storage Condition and Buffer	Rabbit IgG in phosphate buffered saline , pH 7.4, 150mM NaCl, 0.02% sodium azide and 50% glycerol. Store at +4°C short term. Store at -20°C long term. Avoid freeze / thaw cycle.

Protein Information

Name	SLC4A1 (HGNC:11027)
Synonyms	AE1, DI, EPB3
Function	Functions both as a transporter that mediates electroneutral anion exchange across the cell membrane and as a structural protein (PubMed: 10926824 , PubMed: 14734552 , PubMed: 1538405 , PubMed: 16227998 , PubMed: 20151848 , PubMed: 24121512 , PubMed: 28387307 , PubMed: 35835865). Component of the ankyrin-1 complex of the erythrocyte membrane; required for normal flexibility and stability of the erythrocyte membrane and for normal erythrocyte shape via the interactions of its cytoplasmic domain with cytoskeletal proteins, glycolytic enzymes, and hemoglobin (PubMed: 1538405 , PubMed: 20151848 , PubMed: 35835865). Functions as a transporter that mediates the 1:1 exchange of inorganic anions across the erythrocyte membrane. Mediates

chloride-bicarbonate exchange in the kidney, and is required for normal acidification of the urine (PubMed:[10926824](#), PubMed:[14734552](#), PubMed:[16227998](#), PubMed:[24121512](#), PubMed:[28387307](#)).

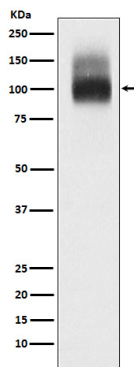
Cellular Location

Cell membrane; Multi-pass membrane protein. Basolateral cell membrane; Multi-pass membrane protein. Note=Detected in the erythrocyte cell membrane and on the basolateral membrane of alpha-intercalated cells in the collecting duct in the kidney.

Tissue Location

Detected in erythrocytes (at protein level).

Images



Western blot analysis of Band 3 / CD233 expression in Red blood cell lysate.

Please note: All products are 'FOR RESEARCH USE ONLY. NOT FOR USE IN DIAGNOSTIC OR THERAPEUTIC PROCEDURES'.