

CRALBP Antibody

Rabbit mAb

Catalog # AP91762

Product Information

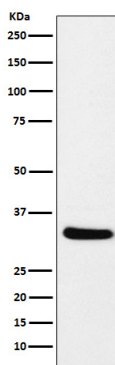
Application	WB, IP
Primary Accession	Q9Z275(mouse)(human:P12271)
Reactivity	Rat, Mouse
Clonality	Monoclonal
Other Names	RLBP1;
Isotype	Rabbit IgG
Host	Rabbit
Calculated MW	36 KDa

Additional Information

Dilution	WB 1:500~1:2000 IP 1:50
Purification	Affinity-chromatography
Immunogen	A synthesized peptide derived from human CRALBP
Description	Participates in the regeneration of active 11-cis-retinol and 11-cis-retinaldehyde, from the inactive 11-trans products of the rhodopsin photocycle and in the de novo synthesis of these retinoids from 11-trans metabolic precursors.
Storage Condition and Buffer	Rabbit IgG in phosphate buffered saline , pH 7.4, 150mM NaCl, 0.02% sodium azide and 50% glycerol. Store at +4°C short term. Store at -20°C long term. Avoid freeze / thaw cycle.

Protein Information

Images



Western blot analysis of CRALBP expression in mouse eyeball lysate.

Please note: All products are 'FOR RESEARCH USE ONLY. NOT FOR USE IN DIAGNOSTIC OR THERAPEUTIC PROCEDURES'.