

PSB9 / LMP2 Antibody

Rabbit mAb

Catalog # AP91760

Product Information

Application	WB, IF, FC, ICC
Primary Accession	P28065
Reactivity	Rat, Human, Mouse
Clonality	Monoclonal
Other Names	Beta1i; LMP2; PSMB 9; PSMB6i; PSMB9; RING12;
Isotype	Rabbit IgG
Host	Rabbit
Calculated MW	23264

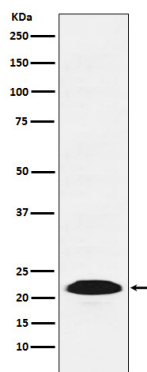
Additional Information

Dilution	WB 1:1000~1:5000 ICC/IF 1:50~1:200 FC 1:50
Purification	Affinity-chromatography
Immunogen	A synthesized peptide derived from human Proteasome 20S LMP2
Description	The proteasome is a multicatalytic proteinase complex which is characterized by its ability to cleave peptides with Arg, Phe, Tyr, Leu, and Glu adjacent to the leaving group at neutral or slightly basic pH. The proteasome has an ATP-dependent proteolytic activity.
Storage Condition and Buffer	Rabbit IgG in phosphate buffered saline , pH 7.4, 150mM NaCl, 0.02% sodium azide and 50% glycerol. Store at +4°C short term. Store at -20°C long term. Avoid freeze / thaw cycle.

Protein Information

Name	PSMB9
Synonyms	LMP2, PSMB6i, RING12
Function	The proteasome is a multicatalytic proteinase complex which is characterized by its ability to cleave peptides with Arg, Phe, Tyr, Leu, and Glu adjacent to the leaving group at neutral or slightly basic pH (PubMed: 33727065 , PubMed: 34819510). The proteasome has an ATP-dependent proteolytic activity. This subunit is involved in antigen processing to generate class I binding peptides. Replacement of PSMB6 by PSMB9 increases the capacity of the immunoproteasome to cleave model peptides after hydrophobic and basic residues.
Cellular Location	Cytoplasm {ECO:0000255 PROSITE-ProRule:PRU00809}. Nucleus

Images



Western blot analysis of Proteasome 20S LMP2 expression in A431 cell lysate.

Please note: All products are 'FOR RESEARCH USE ONLY. NOT FOR USE IN DIAGNOSTIC OR THERAPEUTIC PROCEDURES'.