

Nuf2 Antibody

Rabbit mAb

Catalog # AP91744

Product Information

Application	WB, IF, FC, ICC
Primary Accession	Q9BZD4
Reactivity	Human
Clonality	Monoclonal
Other Names	CDCA1; CT106; hNuf2; hNuf2R; hsNuf2; NUF2; NUF2R;
Isotype	Rabbit IgG
Host	Rabbit
Calculated MW	54304

Additional Information

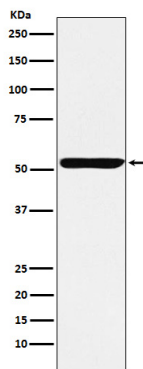
Dilution	WB 1:500~1:2000 ICC/IF 1:100~1:500 FC 1:50
Purification	Affinity-chromatography
Immunogen	A synthesized peptide derived from human Nuf2
Description	Acts as a component of the essential kinetochore-associated NDC80 complex, which is required for chromosome segregation and spindle checkpoint activity. Required for kinetochore integrity and the organization of stable microtubule binding sites in the outer plate of the kinetochore.
Storage Condition and Buffer	Rabbit IgG in phosphate buffered saline , pH 7.4, 150mM NaCl, 0.02% sodium azide and 50% glycerol. Store at +4°C short term. Store at -20°C long term. Avoid freeze / thaw cycle.

Protein Information

Name	NUF2
Synonyms	CDCA1, NUF2R
Function	Acts as a component of the essential kinetochore-associated NDC80 complex, which is required for chromosome segregation and spindle checkpoint activity (PubMed: 12438418 , PubMed: 14654001 , PubMed: 15062103 , PubMed: 15235793 , PubMed: 15239953 , PubMed: 15548592 , PubMed: 17535814). Required for kinetochore integrity and the organization of stable microtubule binding sites in the outer plate of the kinetochore (PubMed: 15548592). The NDC80 complex synergistically enhances the affinity of the SKA1 complex for microtubules and may allow the NDC80 complex to track depolymerizing microtubules (PubMed: 23085020).
Cellular Location	Nucleus. Chromosome, centromere, kinetochore. Note=Localizes to kinetochores from late prophase to anaphase Localizes specifically to the

outer plate of the kinetochore. NDC80 is required for efficient kinetochore localization

Images



Western blot analysis of Nuf2 expression in HeLa cell lysate.

Please note: All products are 'FOR RESEARCH USE ONLY. NOT FOR USE IN DIAGNOSTIC OR THERAPEUTIC PROCEDURES'.