

ALDH1L1 Antibody

Rabbit mAb

Catalog # AP91739

Product Information

Application	WB
Primary Accession	O75891
Reactivity	Rat, Human, Mouse
Clonality	Monoclonal
Other Names	10 FTHFDH; aldh1l1; FDH; FTHFD;
Isotype	Rabbit IgG
Host	Rabbit
Calculated MW	98829

Additional Information

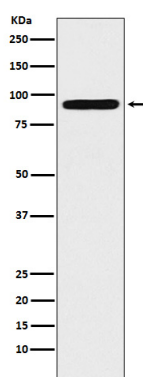
Dilution	WB 1:500~1:2000
Purification	Affinity-chromatography
Immunogen	A synthesized peptide derived from human ALDH1L1
Description	Highly expressed in liver, pancreas and kidney.
Storage Condition and Buffer	Rabbit IgG in phosphate buffered saline , pH 7.4, 150mM NaCl, 0.02% sodium azide and 50% glycerol. Store at +4°C short term. Store at -20°C long term. Avoid freeze / thaw cycle.

Protein Information

Name	ALDH1L1 (HGNC:3978)
Synonyms	FTHFD
Function	Cytosolic 10-formyltetrahydrofolate dehydrogenase that catalyzes the NADP(+)-dependent conversion of 10-formyltetrahydrofolate to tetrahydrofolate and carbon dioxide (PubMed: 19933275 , PubMed: 21238436). May also have an NADP(+)-dependent aldehyde dehydrogenase activity towards formaldehyde, acetaldehyde, propionaldehyde, and benzaldehyde (By similarity).
Cellular Location	Cytoplasm, cytosol.
Tissue Location	Highly expressed in liver, pancreas and kidney.

Images

Western blot analysis of ALDH1L1 expression in 293T cell



lysate.

Please note: All products are 'FOR RESEARCH USE ONLY. NOT FOR USE IN DIAGNOSTIC OR THERAPEUTIC PROCEDURES'.