

NPRC Antibody

Rabbit mAb

Catalog # AP91735

Product Information

Application	WB, FC
Primary Accession	P17342
Reactivity	Rat, Human, Mouse
Clonality	Monoclonal
Other Names	ANPC; ANPRC; GUCY2B; NPR 3; NPR C; Npr3; NPRC;
Isotype	Rabbit IgG
Host	Rabbit
Calculated MW	59808

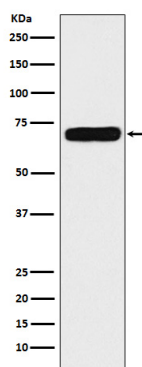
Additional Information

Dilution	WB 1:500~1:2000 FC 1:100
Purification	Affinity-chromatography
Immunogen	A synthesized peptide derived from human Natriuretic Peptide Receptor C
Description	Receptor for the natriuretic peptide hormones, binding with similar affinities atrial natriuretic peptide NPPA/ANP, brain natriuretic peptide NPPB/BNP, and C-type natriuretic peptide NPPC/CNP.
Storage Condition and Buffer	Rabbit IgG in phosphate buffered saline , pH 7.4, 150mM NaCl, 0.02% sodium azide and 50% glycerol. Store at +4°C short term. Store at -20°C long term. Avoid freeze / thaw cycle.

Protein Information

Name	NPR3
Synonyms	ANPRC, C5orf23, NPRC
Function	Receptor for the natriuretic peptide hormones, binding with similar affinities atrial natriuretic peptide NPPA/ANP, brain natriuretic peptide NPPB/BNP, and C-type natriuretic peptide NPPC/CNP. May function as a clearance receptor for NPPA, NPPB and NPPC, regulating their local concentrations and effects. Acts as a regulator of osteoblast differentiation and bone growth by binding to its ligand osteocrin, thereby preventing binding between NPR3/NPR-C and natriuretic peptides, leading to increase cGMP production (By similarity).
Cellular Location	Cell membrane; Single-pass type I membrane protein

Images



Western blot analysis of Natriuretic Peptide Receptor C expression in HeLa cell lysate.

Please note: All products are 'FOR RESEARCH USE ONLY. NOT FOR USE IN DIAGNOSTIC OR THERAPEUTIC PROCEDURES'.