

Gephyrin Antibody

Rabbit mAb

Catalog # AP91732

Product Information

Application	WB, IHC, IF, ICC, IHF
Primary Accession	Q9NOX3
Reactivity	Rat, Human, Mouse
Clonality	Monoclonal
Other Names	Domain E; Domain G; GEPH; GPH; GPHN; GPHRYN;
Isotype	Rabbit IgG
Host	Rabbit
Calculated MW	79748

Additional Information

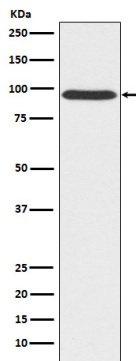
Dilution	WB 1:500~1:2000 IHC 1:50~1:200 ICC/IF 1:50~1:200
Purification	Affinity-chromatography
Immunogen	A synthesized peptide derived from human Gephyrin
Description	Microtubule-associated protein involved in membrane protein-cytoskeleton interactions. It is thought to anchor the inhibitory glycine receptor (GLYR) to subsynaptic microtubules (By similarity). Catalyzes two steps in the biosynthesis of the molybdenum cofactor.
Storage Condition and Buffer	Rabbit IgG in phosphate buffered saline , pH 7.4, 150mM NaCl, 0.02% sodium azide and 50% glycerol. Store at +4°C short term. Store at -20°C long term. Avoid freeze / thaw cycle.

Protein Information

Name	GPHN (HGNC:15465)
Synonyms	GPH, KIAA1385
Function	Microtubule-associated protein involved in membrane protein- cytoskeleton interactions. It is thought to anchor the inhibitory glycine receptor (GLYR) to subsynaptic microtubules (By similarity). Acts as a major instructive molecule at inhibitory synapses, where it also clusters GABA type A receptors (PubMed: 25025157 , PubMed: 26613940).
Cellular Location	Postsynaptic cell membrane; Lipid- anchor; Cytoplasmic side. Cell membrane {ECO:0000250 UniProtKB:Q03555}; Lipid-anchor {ECO:0000250 UniProtKB:Q03555}; Cytoplasmic side {ECO:0000250 UniProtKB:Q03555}. Cytoplasm, cytosol. Cytoplasm, cytoskeleton {ECO:0000250 UniProtKB:Q03555}. Cell projection, dendrite. Postsynaptic density {ECO:0000250 UniProtKB:Q8BUV3}. Note=Cytoplasmic face of glycinergic postsynaptic membranes (By similarity). Forms clusters at

synapses (PubMed:25025157). {ECO:0000250|UniProtKB:Q03555,
ECO:0000269|PubMed:25025157}

Images



Western blot analysis of Gephyrin expression in 293T cell lysate.

Please note: All products are 'FOR RESEARCH USE ONLY. NOT FOR USE IN DIAGNOSTIC OR THERAPEUTIC PROCEDURES'.