

beta Casein Antibody

Rabbit mAb

Catalog # AP91720

Product Information

Application	WB, IP
Primary Accession	P05814
Reactivity	Human
Clonality	Monoclonal
Other Names	Beta-casein; CASB; Casein beta; Csn2;
Isotype	Rabbit IgG
Host	Rabbit
Calculated MW	25382

Additional Information

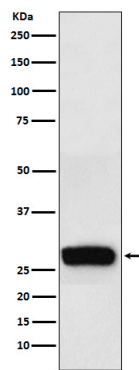
Dilution	WB 1:500~1:1000 IP 1:50
Purification	Affinity-chromatography
Immunogen	A synthesized peptide derived from human beta Casein
Description	Important role in determination of the surface properties of the casein micelles.
Storage Condition and Buffer	Rabbit IgG in phosphate buffered saline , pH 7.4, 150mM NaCl, 0.02% sodium azide and 50% glycerol. Store at +4°C short term. Store at -20°C long term. Avoid freeze / thaw cycle.

Protein Information

Name	CSN2
Synonyms	CASB
Function	Important role in determination of the surface properties of the casein micelles.
Cellular Location	Secreted.
Tissue Location	Mammary gland specific. Secreted in milk.

Images

Western blot analysis of beta Casein expression in Human milk lysate.



Please note: All products are 'FOR RESEARCH USE ONLY. NOT FOR USE IN DIAGNOSTIC OR THERAPEUTIC PROCEDURES'.