

# KIR3DL3 Antibody (Center)

Affinity Purified Rabbit Polyclonal Antibody (Pab)

Catalog # AP9170c

## Product Information

---

<b>Application</b>	WB, IHC-P, FC, E
<b>Primary Accession</b>	<a href="#">Q8N743</a>
<b>Reactivity</b>	Human
<b>Host</b>	Rabbit
<b>Clonality</b>	Polyclonal
<b>Isotype</b>	Rabbit IgG
<b>Clone Names</b>	RB22635
<b>Calculated MW</b>	44928
<b>Antigen Region</b>	132-158

## Additional Information

---

<b>Other Names</b>	Killer cell immunoglobulin-like receptor 3DL3, CD158 antigen-like family member Z, Killer cell inhibitory receptor 1, CD158z, KIR3DL3, CD158Z, KIR3DL7, KIRC1
<b>Target/Specificity</b>	This KIR3DL3 antibody is generated from rabbits immunized with a KLH conjugated synthetic peptide between 132-158 amino acids from the Central region of human KIR3DL3.
<b>Dilution</b>	WB~~1:1000 IHC-P~~1:100~500 FC~~1:10~50 E~~Use at an assay dependent concentration.
<b>Format</b>	Purified polyclonal antibody supplied in PBS with 0.09% (W/V) sodium azide. This antibody is purified through a protein A column, followed by peptide affinity purification.
<b>Storage</b>	Maintain refrigerated at 2-8°C for up to 2 weeks. For long term storage store at -20°C in small aliquots to prevent freeze-thaw cycles.
<b>Precautions</b>	KIR3DL3 Antibody (Center) is for research use only and not for use in diagnostic or therapeutic procedures.

## Protein Information

---

<b>Name</b>	KIR3DL3
<b>Synonyms</b>	CD158Z, KIR3DL7, KIRC1
<b>Function</b>	Receptor on natural killer cells. May inhibit the activity of NK cells thus preventing cell lysis.

## Background

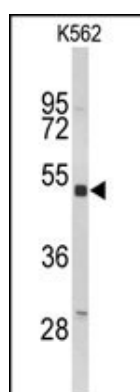
KIR3DL3 is transmembrane glycoproteins expressed by natural killer cells and subsets of T cells. This protein are polymorphic and highly homologous and they are found in a cluster on chromosome 19q13.4 within the 1 Mb leukocyte receptor complex (LRC).

## References

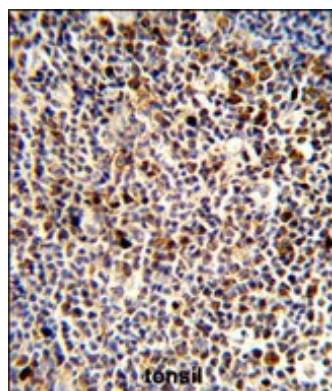
Trompeter,H.I., et.al., J. Immunol. 174 (7), 4135-4143 (2005)

Arnheim,L., et.al., Tissue Antigens 65 (3), 252-259 (2005)

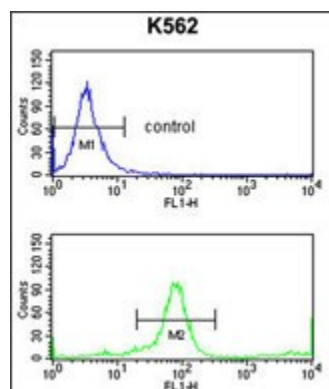
## Images



Western blot analysis of KIR3DL3 Antibody (Center) (Cat. #AP9170c) in K562 cell line lysates (35ug/lane). KIR3DL3 (arrow) was detected using the purified Pab.



Formalin-fixed and paraffin-embedded human tonsil reacted with KIR3DL3 Antibody (Center), which was peroxidase-conjugated to the secondary antibody, followed by DAB staining. This data demonstrates the use of this antibody for immunohistochemistry; clinical relevance has not been evaluated.



KIR3DL3 Antibody (Center) (Cat. #AP9170c) flow cytometry analysis of K562 cells (bottom histogram) compared to a negative control cell (top histogram). FITC-conjugated goat-anti-rabbit secondary antibodies were used for the analysis.