

Fructose 6 Phosphate Kinase Antibody

Rabbit mAb

Catalog # AP91699

Product Information

Application	WB, IF, FC, ICC
Primary Accession	P08237
Reactivity	Rat, Human, Mouse
Clonality	Monoclonal
Other Names	GSD7; PFK1; PFKA; PFKX; PFK-1; Phosphohexokinase;
Isotype	Rabbit IgG
Host	Rabbit
Calculated MW	85183

Additional Information

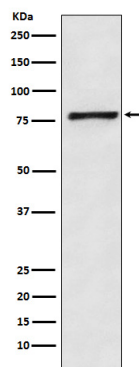
Dilution	WB 1:500~1:2000 ICC/IF 1:50~1:200 FC 1:100
Purification	Affinity-chromatography
Immunogen	A synthesized peptide derived from human Fructose 6 Phosphate Kinase
Description	Carbohydrate degradation; glycolysis; D-glyceraldehyde 3-phosphate and glycerone phosphate from D-glucose: step 3/4.
Storage Condition and Buffer	Rabbit IgG in phosphate buffered saline , pH 7.4, 150mM NaCl, 0.02% sodium azide and 50% glycerol. Store at +4°C short term. Store at -20°C long term. Avoid freeze / thaw cycle.

Protein Information

Name	PFKM
Synonyms	PFKX
Function	Catalyzes the phosphorylation of D-fructose 6-phosphate to fructose 1,6-bisphosphate by ATP, the first committing step of glycolysis.
Cellular Location	Cytoplasm {ECO:0000255 HAMAP-Rule:MF_03184}.

Images

Western blot analysis of Fructose 6 Phosphate Kinase expression in HeLa cell lysate.



Please note: All products are 'FOR RESEARCH USE ONLY. NOT FOR USE IN DIAGNOSTIC OR THERAPEUTIC PROCEDURES'.