

# ILF2 Antibody

Rabbit mAb

Catalog # AP91698

## Product Information

<b>Application</b>	WB, IHC, FC, IP
<b>Primary Accession</b>	<a href="#">Q12905</a>
<b>Reactivity</b>	Rat, Human, Mouse
<b>Clonality</b>	Monoclonal
<b>Other Names</b>	ILF 2; MGC8391; NF45;
<b>Isotype</b>	Rabbit IgG
<b>Host</b>	Rabbit
<b>Calculated MW</b>	43062

## Additional Information

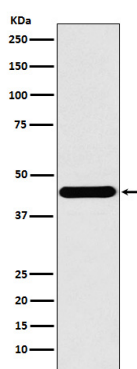
<b>Dilution</b>	WB 1:500~1:2000 IHC 1:50~1:200 IP 1:50 FC 1:100
<b>Purification</b>	Affinity-chromatography
<b>Immunogen</b>	A synthesized peptide derived from human ILF2
<b>Description</b>	Appears to function predominantly as a heterodimeric complex with ILF3. This complex may regulate transcription of the IL2 gene during T-cell activation. It can also promote the formation of stable DNA-dependent protein kinase holoenzyme complexes on DNA.
<b>Storage Condition and Buffer</b>	Rabbit IgG in phosphate buffered saline , pH 7.4, 150mM NaCl, 0.02% sodium azide and 50% glycerol. Store at +4°C short term. Store at -20°C long term. Avoid freeze / thaw cycle.

## Protein Information

<b>Name</b>	ILF2
<b>Synonyms</b>	NF45
<b>Function</b>	Chromatin-interacting protein that forms a stable heterodimer with interleukin enhancer-binding factor 3/ILF3 and plays a role in several biological processes including transcription, innate immunity or cell growth (PubMed: <a href="#">18458058</a> , PubMed: <a href="#">31212927</a> ). Essential for the efficient reshuttling of ILF3 (isoform 1 and isoform 2) into the nucleus. Together with ILF3, forms an RNA-binding complex that is required for mitotic progression and cytokinesis by regulating the expression of a cluster of mitotic genes. Mechanistically, competes with STAU1/STAU2-mediated mRNA decay (PubMed: <a href="#">32433969</a> ). Also plays a role in the inhibition of various viruses including Japanese encephalitis virus or enterovirus 71.
<b>Cellular Location</b>	Nucleus, nucleolus. Cytoplasm. Nucleus. Note=Localized in cytoplasmic mRNP granules containing untranslated mRNAs

## Images

---



Western blot analysis of ILF2 expression in A431 cell lysate.

Please note: All products are 'FOR RESEARCH USE ONLY. NOT FOR USE IN DIAGNOSTIC OR THERAPEUTIC PROCEDURES'.