

GluR2+GluR3 Antibody

Rabbit mAb

Catalog # AP91686

Product Information

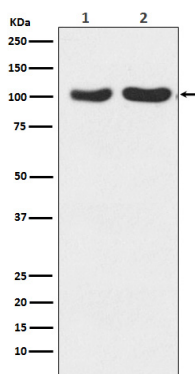
Application	WB, IP
Primary Accession	P42262/P42263
Reactivity	Rat, Human, Mouse
Clonality	Monoclonal
Other Names	GluR K2; GluR K3; GLURB; GLURC; GRIA2; GRIA3;
Isotype	Rabbit IgG
Host	Rabbit
Calculated MW	98 KDa

Additional Information

Dilution	WB 1:500~1:2000 IP 1:100
Purification	Affinity-chromatography
Immunogen	A synthesized peptide derived from human GluR2+GluR3
Description	Ion channels activated by glutamate are typically divided into two classes. Those sensitive to N-methyl-D-aspartate (NMDA) are designated NMDA receptors (NMDAR) while those activated by a-amino-3-hydroxy-5-methyl-4-isoxalone propionic acid (AMPA) are known as AMPA receptors (AMPA).
Storage Condition and Buffer	Rabbit IgG in phosphate buffered saline , pH 7.4, 150mM NaCl, 0.02% sodium azide and 50% glycerol. Store at +4°C short term. Store at -20°C long term. Avoid freeze / thaw cycle.

Protein Information

Images



Western blot analysis of GluR2+GluR3 expression in (1) Human fetal brain lysate; (2) Mouse brain lysate.

Please note: All products are 'FOR RESEARCH USE ONLY. NOT FOR USE IN DIAGNOSTIC OR THERAPEUTIC PROCEDURES'.