

CNDP1 Antibody (C-term)

Affinity Purified Rabbit Polyclonal Antibody (Pab)

Catalog # AP9166b

Product Information

Application	WB, IHC-P, FC, E
Primary Accession	Q96KN2
Reactivity	Human
Host	Rabbit
Clonality	Polyclonal
Isotype	Rabbit IgG
Clone Names	RB22141
Calculated MW	56692
Antigen Region	415-443

Additional Information

Gene ID	84735
Other Names	Beta-Ala-His dipeptidase, CNDP dipeptidase 1, Carnosine dipeptidase 1, Glutamate carboxypeptidase-like protein 2, Serum carnosinase, CNDP1, CN1, CPGL2
Target/Specificity	This CNDP1 antibody is generated from rabbits immunized with a KLH conjugated synthetic peptide between 415-443 amino acids from the C-terminal region of human CNDP1.
Dilution	WB~~1:1000 IHC-P~~1:100~500 FC~~1:10~50 E~~Use at an assay dependent concentration.
Format	Purified polyclonal antibody supplied in PBS with 0.09% (W/V) sodium azide. This antibody is purified through a protein A column, followed by peptide affinity purification.
Storage	Maintain refrigerated at 2-8°C for up to 2 weeks. For long term storage store at -20°C in small aliquots to prevent freeze-thaw cycles.
Precautions	CNDP1 Antibody (C-term) is for research use only and not for use in diagnostic or therapeutic procedures.

Protein Information

Name	CNDP1 (HGNC:20675)
Synonyms	CN1, CPGL2

Function	Catalyzes the peptide bond hydrolysis in Xaa-His dipeptides, displaying the highest activity toward carnosine (beta-alanyl-L- histidine) and anserine (beta-alanyl-3-methyl-histidine).
Cellular Location	Secreted.
Tissue Location	Found in serum and adult nervous central system. Absent in serum from patients with homocarnosinosis

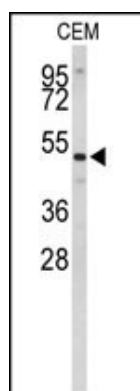
Background

CNDP1 encodes a member of the M20 metalloprotease family. The encoded protein is specifically expressed in the brain, is a homodimeric dipeptidase which was identified as human carnosinase. This protein contains trinucleotide (CTG) repeat length polymorphism in the coding region.

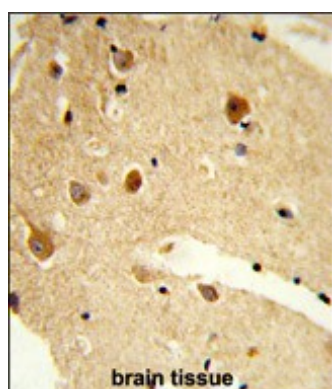
References

Craig,D.W., et.al., Diabet. Med. 26 (11), 1090-1098 (2009)
Mooyaart,A.L., et.al., Diabetes Res. Clin. Pract. 85 (3), 272-278 (2009)

Images

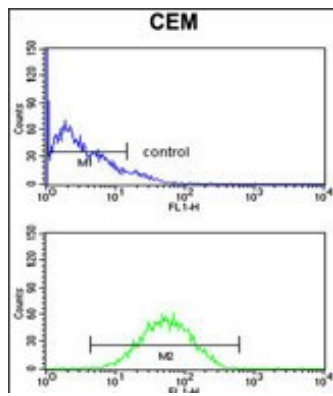


Western blot analysis of CNDP1 Antibody (C-term) (Cat. #AP9166b) in CEM cell line lysates (35ug/lane). CNDP1 (arrow) was detected using the purified Pab.



Formalin-fixed and paraffin-embedded human brain tissue reacted with CNDP1 Antibody (C-term), which was peroxidase-conjugated to the secondary antibody, followed by DAB staining. This data demonstrates the use of this antibody for immunohistochemistry; clinical relevance has not been evaluated.

CNDP1 Antibody (C-term) (Cat. #AP9166b) flow cytometry analysis of CEM cells (bottom histogram) compared to a negative control cell (top histogram). FITC-conjugated goat-anti-rabbit secondary antibodies were used for the analysis.



Please note: All products are 'FOR RESEARCH USE ONLY. NOT FOR USE IN DIAGNOSTIC OR THERAPEUTIC PROCEDURES'.