

# PDE4D Antibody

Rabbit mAb

Catalog # AP91660

## Product Information

---

<b>Application</b>	WB
<b>Primary Accession</b>	<a href="#">Q08499</a>
<b>Reactivity</b>	Human
<b>Clonality</b>	Monoclonal
<b>Other Names</b>	DPDE3; HSPDE4D; PDE43; Pde4d; PDE4DN2; STRK1;
<b>Isotype</b>	Rabbit IgG
<b>Host</b>	Rabbit
<b>Calculated MW</b>	91115

## Additional Information

---

<b>Dilution</b>	WB 1:500~1:2000
<b>Purification</b>	Affinity-chromatography
<b>Immunogen</b>	A synthesized peptide derived from human PDE4D
<b>Description</b>	Hydrolyzes the second messenger cAMP, which is a key regulator of many important physiological processes.
<b>Storage Condition and Buffer</b>	Rabbit IgG in phosphate buffered saline , pH 7.4, 150mM NaCl, 0.02% sodium azide and 50% glycerol. Store at +4°C short term. Store at -20°C long term. Avoid freeze / thaw cycle.

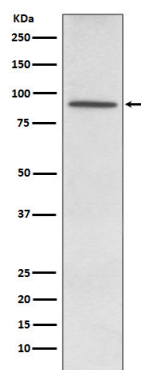
## Protein Information

---

<b>Name</b>	PDE4D ( <a href="#">HGNC:8783</a> )
<b>Synonyms</b>	DPDE3
<b>Function</b>	Hydrolyzes the second messenger cAMP, which is a key regulator of many important physiological processes.
<b>Cellular Location</b>	Apical cell membrane. Cytoplasm. Membrane. Cytoplasm, cytoskeleton. Cytoplasm, cytoskeleton, microtubule organizing center, centrosome Note=Found in the soluble fraction, associated with membranes, and associated with the cytoskeleton and the centrosome (By similarity) Colocalized with SHANK2 to the apical membrane of colonic crypt cells
<b>Tissue Location</b>	Expressed in colonic epithelial cells (at protein level). Widespread; most abundant in skeletal muscle [Isoform 8]; Detected in brain, placenta, lung and kidney.

## Images

---



Western blot analysis of PDE4D expression in K562 cell lysate.

Please note: All products are 'FOR RESEARCH USE ONLY. NOT FOR USE IN DIAGNOSTIC OR THERAPEUTIC PROCEDURES'.