

CDT2 Antibody

Rabbit mAb

Catalog # AP91651

Product Information

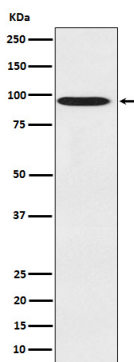
Application	WB, IHC, IF, FC, ICC, IHF
Primary Accession	Q9NZJ0
Reactivity	Rat, Human, Mouse
Clonality	Monoclonal
Other Names	CDW1; DCAF2; Dtl; L2DTL; RAMP;
Isotype	Rabbit IgG
Host	Rabbit
Calculated MW	91 KDa

Additional Information

Dilution	WB 1:1000~1:5000 IHC 1:50~1:100 ICC/IF 1:50~1:100 FC 1:80
Purification	Affinity-chromatography
Immunogen	A synthesized peptide derived from human CDT2
Description	Substrate-specific adapter of a DCX (DDB1-CUL4-X-box) E3 ubiquitin-protein ligase complex required for cell cycle control, DNA damage response and translesion DNA synthesis. The DCX(DTL) complex, also named CRL4(CDT2) complex, mediates the polyubiquitination and subsequent degradation of CDT1 and CDKN1A/p21(CIP1).
Storage Condition and Buffer	Rabbit IgG in phosphate buffered saline , pH 7.4, 150mM NaCl, 0.02% sodium azide and 50% glycerol. Store at +4°C short term. Store at -20°C long term. Avoid freeze / thaw cycle.

Protein Information

Images



Western blot analysis of CDT2 expression in 293T cell lysate.

Please note: All products are 'FOR RESEARCH USE ONLY. NOT FOR USE IN DIAGNOSTIC OR THERAPEUTIC PROCEDURES'.