

Iba1 Antibody

Rabbit mAb

Catalog # AP91647

Product Information

Application	WB, IHC, IF, ICC, IP, IHF
Primary Accession	P55008
Reactivity	Rat, Human, Mouse
Clonality	Monoclonal
Other Names	IBA1; IRT1; AIF-1; IRT-1;
Isotype	Rabbit IgG
Host	Rabbit
Calculated MW	16703

Additional Information

Dilution	WB 1:500~1:1000 IHC 1:100~1:500 ICC/IF 1:50~1:200 IP 1:50
Purification	Affinity-chromatography
Immunogen	A synthesized peptide derived from human Iba1
Description	Actin-binding protein that enhances membrane ruffling and RAC activation. Enhances the actin-bundling activity of LCP1. Binds calcium. Plays a role in RAC signaling and in phagocytosis.
Storage Condition and Buffer	Rabbit IgG in phosphate buffered saline , pH 7.4, 150mM NaCl, 0.02% sodium azide and 50% glycerol. Store at +4°C short term. Store at -20°C long term. Avoid freeze / thaw cycle.

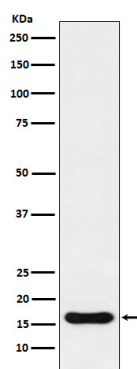
Protein Information

Name	AIF1
Synonyms	G1, IBA1
Function	Actin-binding protein that enhances membrane ruffling and RAC activation. Enhances the actin-bundling activity of LCP1. Binds calcium. Plays a role in RAC signaling and in phagocytosis. May play a role in macrophage activation and function. Promotes the proliferation of vascular smooth muscle cells and of T-lymphocytes. Enhances lymphocyte migration. Plays a role in vascular inflammation.
Cellular Location	Cytoplasm, cytoskeleton {ECO:0000250 UniProtKB:O70200}. Cell projection, ruffle membrane {ECO:0000250 UniProtKB:O70200}; Peripheral membrane protein {ECO:0000250 UniProtKB:O70200}; Cytoplasmic side {ECO:0000250 UniProtKB:O70200}. Cell projection, phagocytic cup {ECO:0000250 UniProtKB:O70200}. Note=Associated with the actin cytoskeleton at membrane ruffles and at sites of phagocytosis {ECO:0000250 UniProtKB:O70200}

Tissue Location

Detected in T-lymphocytes and peripheral blood mononuclear cells.

Images



Western blot analysis of Iba1 expression in U937 cell lysate.

Please note: All products are 'FOR RESEARCH USE ONLY. NOT FOR USE IN DIAGNOSTIC OR THERAPEUTIC PROCEDURES'.