

DDAH1 Antibody

Rabbit mAb

Catalog # AP91642

Product Information

Application	WB, IHC, IF, FC, ICC, IP, IHF
Primary Accession	O94760
Reactivity	Rat, Human, Mouse
Clonality	Monoclonal
Other Names	DDAH; DDAH I; DDAH1; DDAHI; Dimethylargininase 1;
Isotype	Rabbit IgG
Host	Rabbit
Calculated MW	31122

Additional Information

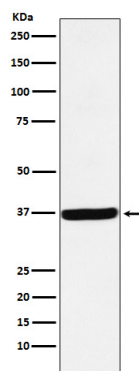
Dilution	WB 1:1000~1:5000 IHC 1:50~1:200 ICC/IF 1:50~1:200 IP 1:40 FC 1:30
Purification	Affinity-chromatography
Immunogen	A synthesized peptide derived from human DDAH1
Description	Hydrolyzes N(G),N(G)-dimethyl-L-arginine (ADMA) and N(G)-monomethyl-L-arginine (MMA) which act as inhibitors of NOS. Has therefore a role in the regulation of nitric oxide generation.
Storage Condition and Buffer	Rabbit IgG in phosphate buffered saline , pH 7.4, 150mM NaCl, 0.02% sodium azide and 50% glycerol. Store at +4°C short term. Store at -20°C long term. Avoid freeze / thaw cycle.

Protein Information

Name	DDAH1 (HGNC:2715)
Synonyms	DDAH
Function	Hydrolyzes N(G),N(G)-dimethyl-L-arginine (ADMA) and N(G)-monomethyl-L-arginine (MMA) which act as inhibitors of NOS. Has therefore a role in the regulation of nitric oxide generation.
Tissue Location	Detected in brain, liver, kidney and pancreas, and at low levels in skeletal muscle.

Images

Western blot analysis of DDAH1 expression in 293 cell lysate.



Please note: All products are 'FOR RESEARCH USE ONLY. NOT FOR USE IN DIAGNOSTIC OR THERAPEUTIC PROCEDURES'.