

KPNA2 Antibody

Rabbit mAb

Catalog # AP91640

Product Information

Application	WB, FC
Primary Accession	P52292
Reactivity	Rat, Human, Mouse
Clonality	Monoclonal
Other Names	QIP2; RCH1; IPOA1; SRP1alpha;
Isotype	Rabbit IgG
Host	Rabbit
Calculated MW	57862

Additional Information

Dilution	WB 1:1000~1:5000 FC 1:50
Purification	Affinity-chromatography
Immunogen	A synthesized peptide derived from human KPNA2
Description	Functions in nuclear protein import as an adapter protein for nuclear receptor KPNB1. Binds specifically and directly to substrates containing either a simple or bipartite NLS motif.
Storage Condition and Buffer	Rabbit IgG in phosphate buffered saline , pH 7.4, 150mM NaCl, 0.02% sodium azide and 50% glycerol. Store at +4°C short term. Store at -20°C long term. Avoid freeze / thaw cycle.

Protein Information

Name	KPNA2 (HGNC:6395)
Synonyms	RCH1, SRP1
Function	Functions in nuclear protein import as an adapter protein for nuclear receptor KPNB1 (PubMed: 28991411 , PubMed: 32130408 , PubMed: 7604027 , PubMed: 7754385). Binds specifically and directly to substrates containing either a simple or bipartite NLS motif (PubMed: 28991411 , PubMed: 32130408 , PubMed: 7604027 , PubMed: 7754385). Docking of the importin/substrate complex to the nuclear pore complex (NPC) is mediated by KPNB1 through binding to nucleoporin FxFG repeats and the complex is subsequently translocated through the pore by an energy requiring, Ran-dependent mechanism (PubMed: 7604027 , PubMed: 7754385). At the nucleoplasmic side of the NPC, Ran binds to importin-beta and the three components separate and importin-alpha and -beta are re-exported from the nucleus to the cytoplasm where GTP hydrolysis releases Ran from importin. The directionality of nuclear import is thought to be conferred by an asymmetric distribution of the GTP- and GDP-bound forms of Ran between the cytoplasm

and nucleus. Mediator of PR-DUB complex component BAP1 nuclear import; acts redundantly with KPNA1 and Transportin-1/TNPO1 (PubMed:[35446349](#)).

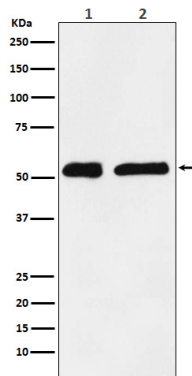
Cellular Location

Cytoplasm. Nucleus

Tissue Location

Expressed ubiquitously.

Images



Western blot analysis of KPNA2 expression in (1) HeLa cell lysate; (2) C6 cell lysate.

Please note: All products are 'FOR RESEARCH USE ONLY. NOT FOR USE IN DIAGNOSTIC OR THERAPEUTIC PROCEDURES'.