

PGC1 beta Antibody

Rabbit mAb

Catalog # AP91633

Product Information

Application	WB, IP
Primary Accession	Q86YN6
Reactivity	Rat, Human, Mouse
Clonality	Monoclonal
Other Names	PERC; PGC1; PPARGC1; Ppargc1b;
Isotype	Rabbit IgG
Host	Rabbit
Calculated MW	113222

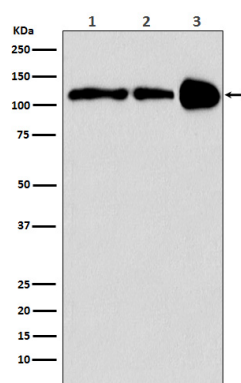
Additional Information

Dilution	WB 1:500~1:2000 IP 1:50
Purification	Affinity-chromatography
Immunogen	A synthesized peptide derived from human PGC1 beta
Description	Plays a role of stimulator of transcription factors and nuclear receptors activities. Activates transcriptional activity of estrogen receptor alpha, nuclear respiratory factor 1 (NRF1) and glucocorticoid receptor in the presence of glucocorticoids.
Storage Condition and Buffer	Rabbit IgG in phosphate buffered saline , pH 7.4, 150mM NaCl, 0.02% sodium azide and 50% glycerol. Store at +4°C short term. Store at -20°C long term. Avoid freeze / thaw cycle.

Protein Information

Name	PPARGC1B
Synonyms	PERC, PGC1, PGC1B, PPARGC1
Function	Plays a role of stimulator of transcription factors and nuclear receptors activities. Activates transcriptional activity of estrogen receptor alpha, nuclear respiratory factor 1 (NRF1) and glucocorticoid receptor in the presence of glucocorticoids. May play a role in constitutive non-adrenergic-mediated mitochondrial biogenesis as suggested by increased basal oxygen consumption and mitochondrial number when overexpressed. May be involved in fat oxidation and non- oxidative glucose metabolism and in the regulation of energy expenditure. Induces the expression of PERM1 in the skeletal muscle in an ESRRA-dependent manner.
Cellular Location	Nucleus.
Tissue Location	Ubiquitous with higher expression in heart, brain and skeletal muscle.

Images



Western blot analysis of PGC1 beta expression in (1) HeLa cell lysate; (2) Mouse spleen lysate; (3) Rat spleen lysate.

Please note: All products are 'FOR RESEARCH USE ONLY. NOT FOR USE IN DIAGNOSTIC OR THERAPEUTIC PROCEDURES'.