

Epac1 Antibody

Rabbit mAb

Catalog # AP91631

Product Information

Application	WB, IHC, IF, ICC, IP, IHF
Primary Accession	O95398
Reactivity	Rat, Human, Mouse
Clonality	Monoclonal
Other Names	CAMP-GEFI; EPAC; EPAC1; HSU79275; bcm910;
Isotype	Rabbit IgG
Host	Rabbit
Calculated MW	103751

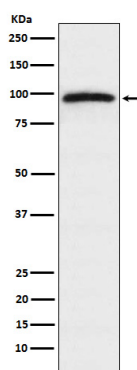
Additional Information

Dilution	WB 1:500~1:2000 IHC 1:50~1:200 ICC/IF 1:50~1:200 IP 1:50
Purification	Affinity-chromatography
Immunogen	A synthesized peptide derived from human Epac1
Description	The activation of Rap1 by cAMP is independent of PKA and is mediated by recently discovered family of guanine nucleotide exchange factors (GEFs) called cAMP-GEFs or Epacs. The Epac signaling therefore represents a novel mechanism for cAMP signaling within the cAMP cascade.
Storage Condition and Buffer	Rabbit IgG in phosphate buffered saline, pH 7.4, 150mM NaCl, 0.02% sodium azide and 50% glycerol. Store at +4°C short term. Store at -20°C long term. Avoid freeze / thaw cycle.

Protein Information

Name	RAPGEF3
Synonyms	CGEF1, EPAC, EPAC1
Function	Guanine nucleotide exchange factor (GEF) for RAP1A and RAP2A small GTPases that is activated by binding cAMP. Through simultaneous binding of PDE3B to RAPGEF3 and PIK3R6 is assembled in a signaling complex in which it activates the PI3K gamma complex and which is involved in angiogenesis. Plays a role in the modulation of the cAMP- induced dynamic control of endothelial barrier function through a pathway that is independent on Rho-mediated signaling. Required for the actin rearrangement at cell-cell junctions, such as stress fibers and junctional actin.
Cellular Location	Endomembrane system
Tissue Location	Widely expressed with highest levels in adult kidney, heart, thyroid and brain, and fetal kidney

Images



Western blot analysis of Epac1 expression in HeLa cell lysate.

Please note: All products are 'FOR RESEARCH USE ONLY. NOT FOR USE IN DIAGNOSTIC OR THERAPEUTIC PROCEDURES'.