

# CD7 Antibody

Rabbit mAb

Catalog # AP91619

## Product Information

---

<b>Application</b>	WB, IHC, IF, ICC, IP, IHF
<b>Primary Accession</b>	<a href="#">P09564</a>
<b>Reactivity</b>	Human
<b>Clonality</b>	Monoclonal
<b>Other Names</b>	CD7; GP40; LEU9; Tp40; TP41;
<b>Isotype</b>	Rabbit IgG
<b>Host</b>	Rabbit
<b>Calculated MW</b>	25409

## Additional Information

---

<b>Dilution</b>	WB 1:500~1:2000 IHC 1:50~1:200 ICC/IF 1:50~1:200 IP 1:50
<b>Purification</b>	Affinity-chromatography
<b>Immunogen</b>	A synthesized peptide derived from human CD7
<b>Description</b>	Not yet known.
<b>Storage Condition and Buffer</b>	Rabbit IgG in phosphate buffered saline , pH 7.4, 150mM NaCl, 0.02% sodium azide and 50% glycerol. Store at +4°C short term. Store at -20°C long term. Avoid freeze / thaw cycle.

## Protein Information

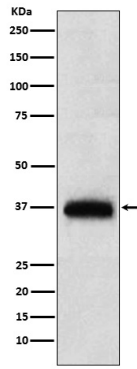
---

<b>Name</b>	CD7
<b>Function</b>	Transmembrane glycoprotein expressed by T-cells and natural killer (NK) cells and their precursors (PubMed: <a href="#">7506726</a> ). Plays a costimulatory role in T-cell activation upon binding to its ligand K12/SECTM1 (PubMed: <a href="#">10652336</a> ). In turn, mediates the production of cytokines such as IL-2 (PubMed: <a href="#">1709867</a> ). On resting NK-cells, CD7 activation results in a significant induction of interferon-gamma levels (PubMed: <a href="#">7506726</a> ).
<b>Cellular Location</b>	Membrane; Single-pass type I membrane protein.
<b>Tissue Location</b>	Expressed on T-cells and natural killer (NK) cells and their precursors.

## Images

---

Western blot analysis of CD7 expression in human PBMC lysate.



Please note: All products are 'FOR RESEARCH USE ONLY. NOT FOR USE IN DIAGNOSTIC OR THERAPEUTIC PROCEDURES'.