

MCM5 Antibody

Rabbit mAb

Catalog # AP91615

Product Information

Application	WB, IHC, IF, FC, ICC, IP, IHF
Primary Accession	P33992
Reactivity	Human, Mouse
Clonality	Monoclonal
Other Names	CDC46; MCM5; MGC5315; P1 CDC46;
Isotype	Rabbit IgG
Host	Rabbit
Calculated MW	82286

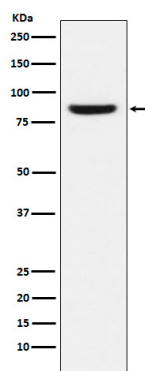
Additional Information

Dilution	WB 1:500~1:2000 IHC 1:50~1:200 ICC/IF 1:50~1:200 IP 1:50 FC 1:50
Purification	Affinity-chromatography
Immunogen	A synthesized peptide derived from human MCM5
Description	MCM5 Belongs to the MCM family.
Storage Condition and Buffer	Rabbit IgG in phosphate buffered saline , pH 7.4, 150mM NaCl, 0.02% sodium azide and 50% glycerol. Store at +4°C short term. Store at -20°C long term. Avoid freeze / thaw cycle.

Protein Information

Name	MCM5
Synonyms	CDC46
Function	Acts as a component of the MCM2-7 complex (MCM complex) which is the replicative helicase essential for 'once per cell cycle' DNA replication initiation and elongation in eukaryotic cells. Core component of CDC45-MCM-GINS (CMG) helicase, the molecular machine that unwinds template DNA during replication, and around which the replisome is built (PubMed: 16899510 , PubMed: 32453425 , PubMed: 34694004 , PubMed: 34700328 , PubMed: 35585232). The active ATPase sites in the MCM2- 7 ring are formed through the interaction surfaces of two neighboring subunits such that a critical structure of a conserved arginine finger motif is provided in trans relative to the ATP-binding site of the Walker A box of the adjacent subunit. The six ATPase active sites, however, are likely to contribute differentially to the complex helicase activity (PubMed: 32453425).
Cellular Location	Nucleus. Chromosome. Note=Associated with chromatin before the formation of nuclei and detaches from it as DNA replication progresses.

Images



Western blot analysis of MCM5 expression in MCF-7 cell lysate.

Please note: All products are 'FOR RESEARCH USE ONLY. NOT FOR USE IN DIAGNOSTIC OR THERAPEUTIC PROCEDURES'.