

gamma Synuclein Antibody

Rabbit mAb

Catalog # AP91571

Product Information

| | |
|--------------------------|--|
| Application | WB, IHC, IF, FC, ICC, IP, IHF |
| Primary Accession | O76070 |
| Reactivity | Rat, Human |
| Clonality | Monoclonal |
| Other Names | BCSG1; Breast cancer specific gene 1 protein; Gamma synuclein; Persyn; PRSN; SNCG; SR; Synoretin; Synuclein gamma; |
| Isotype | Rabbit IgG |
| Host | Rabbit |
| Calculated MW | 13331 |

Additional Information

| | |
|-------------------------------------|---|
| Dilution | WB 1:500~1:2000 IHC 1:50~1:200 ICC/IF 1:50~1:200 IP 1:20 FC 1:30 |
| Purification | Affinity-chromatography |
| Immunogen | A synthesized peptide derived from human gamma Synuclein |
| Description | Plays a role in neurofilament network integrity. May be involved in modulating axonal architecture during development and in the adult. In vitro, increases the susceptibility of neurofilament-H to calcium-dependent proteases (By similarity). |
| Storage Condition and Buffer | Rabbit IgG in phosphate buffered saline , pH 7.4, 150mM NaCl, 0.02% sodium azide and 50% glycerol. Store at +4°C short term. Store at -20°C long term. Avoid freeze / thaw cycle. |

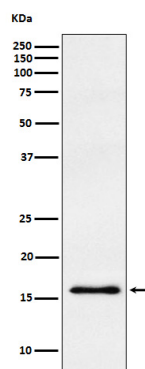
Protein Information

| | |
|--------------------------|--|
| Name | SNCG |
| Synonyms | BCSG1, PERSYN, PRSN |
| Function | Plays a role in neurofilament network integrity. May be involved in modulating axonal architecture during development and in the adult. In vitro, increases the susceptibility of neurofilament-H to calcium-dependent proteases (By similarity). May also function in modulating the keratin network in skin. Activates the MAPK and Elk-1 signal transduction pathway (By similarity). |
| Cellular Location | Cytoplasm, perinuclear region. Cytoplasm, cytoskeleton, microtubule organizing center, centrosome. Cytoplasm, cytoskeleton, spindle. Note=Associated with centrosomes in several interphase cells. In mitotic cells, localized to the poles of the spindle |

Tissue Location

Highly expressed in brain, particularly in the substantia nigra. Also expressed in the corpus callosum, heart, skeletal muscle, ovary, testis, colon and spleen. Weak expression in pancreas, kidney and lung

Images



Western blot analysis of gamma Synuclein expression in human fetal brain lysate.

Please note: All products are 'FOR RESEARCH USE ONLY. NOT FOR USE IN DIAGNOSTIC OR THERAPEUTIC PROCEDURES'.