

RAP80 Antibody

Rabbit mAb

Catalog # AP91550

Product Information

| | |
|--------------------------|---|
| Application | WB, IHC, IF, ICC, IHF |
| Primary Accession | Q96RL1 |
| Reactivity | Human |
| Clonality | Monoclonal |
| Other Names | BRCA1-A complex subunit RAP80; RAP80; Receptor associated protein 80; RIP110; Rxrip110; UIMC1; X2HRIP110; |
| Isotype | Rabbit IgG |
| Host | Rabbit |
| Calculated MW | 79727 |

Additional Information

| | |
|-------------------------------------|--|
| Dilution | WB 1:1000~1:5000 IHC 1:50~1:200 ICC/IF 1:50~1:200 |
| Purification | Affinity-chromatography |
| Immunogen | A synthesized peptide derived from human RAP80 |
| Description | Ubiquitin-binding protein that specifically recognizes and binds 'Lys-63'-linked ubiquitin. Plays a central role in the BRCA1-A complex by specifically binding 'Lys-63'-linked ubiquitinated histones H2A and H2AX at DNA lesions sites, leading to target the BRCA1-BARD1 heterodimer to sites of DNA damage at double-strand breaks (DSBs). |
| Storage Condition and Buffer | Rabbit IgG in phosphate buffered saline , pH 7.4, 150mM NaCl, 0.02% sodium azide and 50% glycerol. Store at +4°C short term. Store at -20°C long term. Avoid freeze / thaw cycle. |

Protein Information

| | |
|-----------------|---|
| Name | UIMC1 |
| Synonyms | RAP80, RXRIP110 |
| Function | Ubiquitin-binding protein (PubMed: 24627472). Specifically recognizes and binds 'Lys-63'-linked ubiquitin (PubMed: 19328070 , Ref.38). Plays a central role in the BRCA1-A complex by specifically binding 'Lys-63'-linked ubiquitinated histones H2A and H2AX at DNA lesions sites, leading to target the BRCA1-BARD1 heterodimer to sites of DNA damage at double-strand breaks (DSBs). The BRCA1-A complex also possesses deubiquitinase activity that specifically removes 'Lys-63'- linked ubiquitin on histones H2A and H2AX. Also weakly binds monoubiquitin but with much less affinity than 'Lys-63'-linked ubiquitin. May interact with monoubiquitinated histones H2A and H2B; the relevance of such results is however unclear in vivo. Does not bind Lys-48'-linked ubiquitin. May indirectly act as a transcriptional repressor by |

inhibiting the interaction of NR6A1 with the corepressor NCOR1.

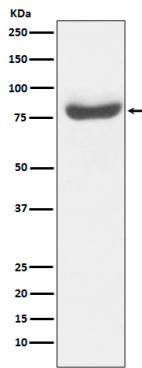
Cellular Location

Nucleus. Note=Localizes at sites of DNA damage at double-strand breaks (DSBs)

Tissue Location

Expressed in testis, ovary, thymus and heart. Expressed in germ cells of the testis.

Images



Western blot analysis of RAP80 expression in 293T cell lysate.

Please note: All products are 'FOR RESEARCH USE ONLY. NOT FOR USE IN DIAGNOSTIC OR THERAPEUTIC PROCEDURES'.