

ACE1 Antibody

Rabbit mAb

Catalog # AP91542

Product Information

Application	WB, IHC, FC
Primary Accession	P12821
Reactivity	Human, Mouse
Clonality	Monoclonal
Other Names	Angiotensin-converting enzyme; somatic isoform precursor; CD143 antigen; DCP; DCP1; Dipeptidyl carboxypeptidase I; Kininase II;
Isotype	Rabbit IgG
Host	Rabbit
Calculated MW	195 KDa

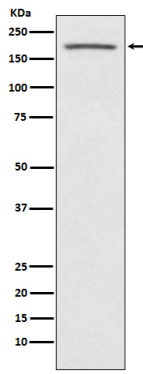
Additional Information

Dilution	WB 1:500~1:1000 IHC 1:50~1:200 FC 1:30
Purification	Affinity-chromatography
Immunogen	A synthesized peptide derived from human ACE1
Description	Converts angiotensin I to angiotensin II by release of the terminal His-Leu, this results in an increase of the vasoconstrictor activity of angiotensin. Also able to inactivate bradykinin, a potent vasodilator. Has also a glycosidase activity which releases GPI-anchored proteins from the membrane by cleaving the mannose linkage in the GPI moiety.
Storage Condition and Buffer	Rabbit IgG in phosphate buffered saline , pH 7.4, 150mM NaCl, 0.02% sodium azide and 50% glycerol. Store at +4°C short term. Store at -20°C long term. Avoid freeze / thaw cycle.

Protein Information

Images

Western blot analysis of ACE1 expression in human fetal kidney lysate.



Please note: All products are 'FOR RESEARCH USE ONLY. NOT FOR USE IN DIAGNOSTIC OR THERAPEUTIC PROCEDURES'.