

Lamin B2 Antibody

Rabbit mAb

Catalog # AP91538

Product Information

Application	WB, IHC, IF, FC, ICC, IP, IHF
Primary Accession	Q03252
Reactivity	Rat, Human, Mouse
Clonality	Monoclonal
Other Names	LAMB2; LMN 2; LMN B2; LMN2; LMNB2;
Isotype	Rabbit IgG
Host	Rabbit
Calculated MW	69948

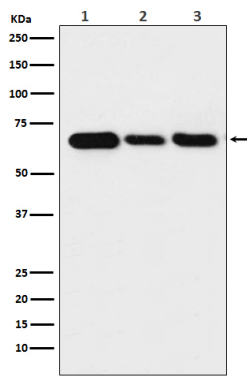
Additional Information

Dilution	WB 1:500~1:2000 IHC 1:50~1:200 ICC/IF 1:50~1:200 IP 1:50 FC 1:50
Purification	Affinity-chromatography
Immunogen	A synthesized peptide derived from human Lamin B2
Description	Lamins are components of the nuclear lamina, a fibrous layer on the nucleoplasmic side of the inner nuclear membrane, which is thought to provide a framework for the nuclear envelope and may also interact with chromatin.
Storage Condition and Buffer	Rabbit IgG in phosphate buffered saline , pH 7.4, 150mM NaCl, 0.02% sodium azide and 50% glycerol. Store at +4°C short term. Store at -20°C long term. Avoid freeze / thaw cycle.

Protein Information

Name	LMNB2
Synonyms	LMN2
Function	Lamins are intermediate filament proteins that assemble into a filamentous meshwork, and which constitute the major components of the nuclear lamina, a fibrous layer on the nucleoplasmic side of the inner nuclear membrane (PubMed: 33033404). Lamins provide a framework for the nuclear envelope, bridging the nuclear envelope and chromatin, thereby playing an important role in nuclear assembly, chromatin organization, nuclear membrane and telomere dynamics (PubMed: 33033404). The structural integrity of the lamina is strictly controlled by the cell cycle, as seen by the disintegration and formation of the nuclear envelope in prophase and telophase, respectively (PubMed: 33033404).
Cellular Location	Nucleus lamina.

Images



Western blot analysis of Lamin B2 expression in (1) Jurkat cell lysate; (2) NIH/3T3 cell lysate; (3) C6 cell lysate.

Image not found : 202311/AP91538-IHC.jpg

Immunohistochemical analysis of paraffin-embedded human spleen, using Lamin B2 Antibody.

Image not found : 202311/AP91538-IF.jpg

Immunofluorescent analysis of Hela cells, using Lamin B2 Antibody .

Please note: All products are 'FOR RESEARCH USE ONLY. NOT FOR USE IN DIAGNOSTIC OR THERAPEUTIC PROCEDURES'.