

KAT9 / Elp3 Antibody

Rabbit mAb

Catalog # AP91523

Product Information

Application	WB, IF, ICC, IP
Primary Accession	Q9H9T3
Reactivity	Rat, Human, Mouse
Clonality	Monoclonal
Other Names	Elongation protein 3 homolog; elp3; hELP3; Kat9;
Isotype	Rabbit IgG
Host	Rabbit
Calculated MW	62259

Additional Information

Dilution	WB 1:500~1:2000 ICC/IF 1:50~1:200 IP 1:50
Purification	Affinity-chromatography
Immunogen	A synthesized peptide derived from human KAT9 / Elp3
Description	Catalytic histone acetyltransferase subunit of the RNA polymerase II elongator complex, which is a component of the RNA polymerase II (Pol II) holoenzyme and is involved in transcriptional elongation. Elongator may play a role in chromatin remodeling and is involved in acetylation of histones H3 and probably H4. May also have a methyltransferase activity.
Storage Condition and Buffer	Rabbit IgG in phosphate buffered saline , pH 7.4, 150mM NaCl, 0.02% sodium azide and 50% glycerol. Store at +4°C short term. Store at -20°C long term. Avoid freeze / thaw cycle.

Protein Information

Name	ELP3 {ECO:0000303 PubMed:15902492, ECO:0000312 HGNC:HGNC:20696}
Function	Catalytic tRNA acetyltransferase subunit of the elongator complex which is required for multiple tRNA modifications, including mcm5U (5-methoxycarbonylmethyl uridine), mcm5s2U (5-methoxycarbonylmethyl-2-thiouridine), and ncm5U (5-carbamoylmethyl uridine) (PubMed: 29415125). In the elongator complex, acts as a tRNA uridine(34) acetyltransferase by mediating formation of carboxymethyluridine in the wobble base at position 34 in tRNAs (By similarity). May also act as a protein lysine acetyltransferase by mediating acetylation of target proteins; such activity is however unclear in vivo and recent evidences suggest that ELP3 primarily acts as a tRNA acetyltransferase (PubMed: 29415125). Not a major acetyltransferase of tubulin (PubMed: 22153374). Involved in neurogenesis: regulates the migration and branching of projection neurons in the developing cerebral cortex, through a process depending on alpha-tubulin acetylation (PubMed: 19185337). Required for acetylation of GJA1 in the

developing cerebral cortex (By similarity).

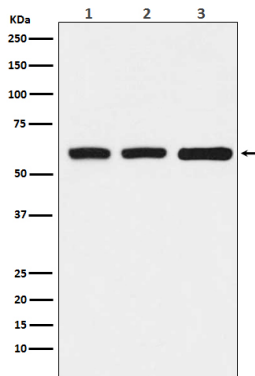
Cellular Location

Cytoplasm. Nucleus [Isoform 2]: Cytoplasm. Nucleus

Tissue Location

Expressed in the cerebellum and spinal motor neurons.

Images



Western blot analysis of KAT9 / Elp3 expression in (1) HeLa cell lysate; (2) RAW264.7 cell lysate; (3) Rat kidney lysate.

Please note: All products are 'FOR RESEARCH USE ONLY. NOT FOR USE IN DIAGNOSTIC OR THERAPEUTIC PROCEDURES'.