

# ETS1 Antibody

Rabbit mAb

Catalog # AP91517

## Product Information

<b>Application</b>	WB, FC
<b>Primary Accession</b>	<a href="#">P14921</a>
<b>Reactivity</b>	Human, Mouse
<b>Clonality</b>	Monoclonal
<b>Other Names</b>	C ets 1 protein; ETS 1; ETS1; ETS1 oncogene; EWSR2; Oncogene ETS1; P54; Protein C-ets-1;
<b>Isotype</b>	Rabbit IgG
<b>Host</b>	Rabbit
<b>Calculated MW</b>	50408

## Additional Information

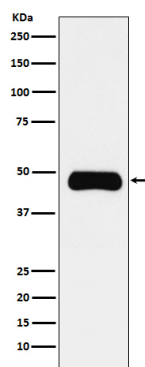
<b>Dilution</b>	WB 1:500~1:2000 FC 1:80
<b>Purification</b>	Affinity-chromatography
<b>Immunogen</b>	A synthesized peptide derived from human ETS1
<b>Description</b>	Transcription factor.
<b>Storage Condition and Buffer</b>	Rabbit IgG in phosphate buffered saline , pH 7.4, 150mM NaCl, 0.02% sodium azide and 50% glycerol. Store at +4°C short term. Store at -20°C long term. Avoid freeze / thaw cycle.

## Protein Information

<b>Name</b>	ETS1
<b>Synonyms</b>	EWSR2
<b>Function</b>	Transcription factor (PubMed: <a href="#">10698492</a> , PubMed: <a href="#">11909962</a> ). Directly controls the expression of cytokine and chemokine genes in a wide variety of different cellular contexts (PubMed: <a href="#">20378371</a> ). May control the differentiation, survival and proliferation of lymphoid cells (PubMed: <a href="#">20378371</a> ). May also regulate angiogenesis through regulation of expression of genes controlling endothelial cell migration and invasion (PubMed: <a href="#">15247905</a> , PubMed: <a href="#">15592518</a> ).
<b>Cellular Location</b>	Nucleus. Cytoplasm Note=Delocalizes from nucleus to cytoplasm when coexpressed with isoform Ets-1 p27.
<b>Tissue Location</b>	Highly expressed within lymphoid cells. Isoforms c- ETS-1A and Ets-1 p27 are both detected in all fetal tissues tested, but vary with tissue type in adult tissues. None is detected in brain or kidney.

## Images

---



Western blot analysis of Insulin Receptor R expression in Daudi cell lysate.

Please note: All products are 'FOR RESEARCH USE ONLY. NOT FOR USE IN DIAGNOSTIC OR THERAPEUTIC PROCEDURES'.