

Lambda Light chain Antibody

Rabbit mAb

Catalog # AP91506

Product Information

| | |
|--------------------------|---|
| Application | WB, IHC, IF, FC, ICC, IHF |
| Primary Accession | P01701/P01842 |
| Reactivity | Human |
| Clonality | Monoclonal |
| Other Names | Bence Jones protein; BJP; Constant region of lambda light chains; Ig lambda chain C regions; IGLC; IGLC1; IGLC2; IGLC3; IGLC6; IGLV; Immunoglobulin lambda constant 1; Mcg marker; Paraprotein; |
| Isotype | Rabbit IgG |
| Host | Rabbit |
| Calculated MW | 25 KDa |

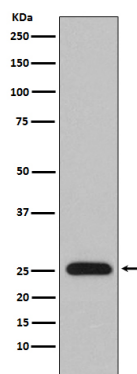
Additional Information

| | |
|-------------------------------------|---|
| Dilution | WB 1:1000~1:5000 IHC 1:50~1:200 ICC/IF 1:50~1:200 FC 1:50 |
| Purification | Affinity-chromatography |
| Immunogen | A synthesized peptide derived from human Lambda Light chain |
| Description | All five immunoglobulin classes share the same basic four polypeptide chain structure of two heavy-chains and two light chains. There are five heavy chain types, and two light-chain types (Kappa and Lambda) both having a molecular weight of 22.5kDa. Any heavy-chain type can associate with either light-chain type, but on any immunoglobulin molecule both light-chains are of the same type. |
| Storage Condition and Buffer | Rabbit IgG in phosphate buffered saline , pH 7.4, 150mM NaCl, 0.02% sodium azide and 50% glycerol. Store at +4°C short term. Store at -20°C long term. Avoid freeze / thaw cycle. |

Protein Information

Images

Western blot analysis of Lambda Light chain expression in human plasma lysate.



Please note: All products are 'FOR RESEARCH USE ONLY. NOT FOR USE IN DIAGNOSTIC OR THERAPEUTIC PROCEDURES'.