

Prolactin Receptor Antibody

Rabbit mAb

Catalog # AP91497

Product Information

Application	WB, IHC, IF, ICC, IHF
Primary Accession	P16471
Reactivity	Rat, Human, Mouse
Clonality	Monoclonal
Other Names	CPRLP; HPRL; hPRL receptor; Lactogen receptor; MFAB; OPR; Pr-1; Pr-3; PRLR; Prolactin receptor a;
Isotype	Rabbit IgG
Host	Rabbit
Calculated MW	69506

Additional Information

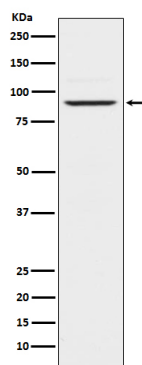
Dilution	WB 1:500~1:2000 IHC 1:50~1:200 ICC/IF 1:50~1:200
Purification	Affinity-chromatography
Immunogen	A synthesized peptide derived from human Prolactin Receptor
Description	Activate multiple signal transduction pathways in breast cancer cells, including the Jak/Stat, PI3K/Akt, and MAPK pathways, leading to both pro-proliferative and anti-apoptotic downstream effects.
Storage Condition and Buffer	Rabbit IgG in phosphate buffered saline , pH 7.4, 150mM NaCl, 0.02% sodium azide and 50% glycerol. Store at +4°C short term. Store at -20°C long term. Avoid freeze / thaw cycle.

Protein Information

Name	PRLR
Function	This is a receptor for the anterior pituitary hormone prolactin (PRL). Acts as a prosurvival factor for spermatozoa by inhibiting sperm capacitation through suppression of SRC kinase activation and stimulation of AKT. Isoform 4 is unable to transduce prolactin signaling. Isoform 6 is unable to transduce prolactin signaling.
Cellular Location	Membrane; Single-pass type I membrane protein
Tissue Location	Expressed in breast, placenta, kidney, liver and pancreas.

Images

Western blot analysis of Prolactin Receptor expression in



Jurkat cell lysate.

Please note: All products are 'FOR RESEARCH USE ONLY. NOT FOR USE IN DIAGNOSTIC OR THERAPEUTIC PROCEDURES'.