

MCM7 Antibody

Rabbit mAb

Catalog # AP91495

Product Information

Application	WB, IHC, IF, FC, ICC, IP, IHF
Primary Accession	P33993
Reactivity	Rat, Human, Mouse
Clonality	Monoclonal
Other Names	CDC47 homolog; P1.1-MCM3; MCM7; CDC47; MCM2; P1CDC47; P85MCM; PNAS146; PPP1R104;
Isotype	Rabbit IgG
Host	Rabbit
Calculated MW	81 KDa

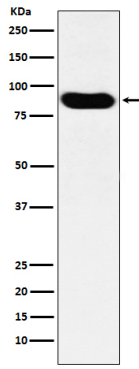
Additional Information

Dilution	WB 1:500~1:2000 IHC 1:50~1:200 ICC/IF 1:50~1:200 IP 1:50 FC 1:50
Purification	Affinity-chromatography
Immunogen	A synthesized peptide derived from human MCM7
Description	Acts as component of the MCM2-7 complex (MCM complex) which is the putative replicative helicase essential for 'once per cell cycle' DNA replication initiation and elongation in eukaryotic cells. The active ATPase sites in the MCM2-7 ring are formed through the interaction surfaces of two neighboring subunits such that a critical structure of a conserved arginine finger motif is provided in trans relative to the ATP-binding site of the Walker A box of the adjacent subunit.
Storage Condition and Buffer	Rabbit IgG in phosphate buffered saline , pH 7.4, 150mM NaCl, 0.02% sodium azide and 50% glycerol. Store at +4°C short term. Store at -20°C long term. Avoid freeze / thaw cycle.

Protein Information

Images

Western blot analysis of MCM7 expression in HeLa cell lysate.



Please note: All products are 'FOR RESEARCH USE ONLY. NOT FOR USE IN DIAGNOSTIC OR THERAPEUTIC PROCEDURES'.