

Dynamin 1 Antibody

Rabbit mAb

Catalog # AP91488

Product Information

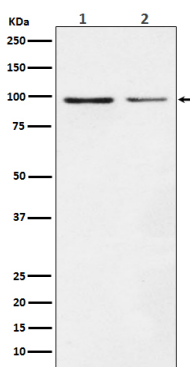
Application	WB, IHC, IF, ICC, IHF
Primary Accession	Q05193
Reactivity	Rat, Human, Mouse
Clonality	Monoclonal
Other Names	B dynamin; D100; DNM 1; DNM1; Dynamin; Dynamin1;
Isotype	Rabbit IgG
Host	Rabbit
Calculated MW	97 KDa

Additional Information

Dilution	WB 1:500~1:2000 IHC 1:50~1:200 ICC/IF 1:50~1:200
Purification	Affinity-chromatography
Immunogen	A synthesized peptide derived from human Dynamin 1
Description	Microtubule-associated force-producing protein involved in producing microtubule bundles and able to bind and hydrolyze GTP. Most probably involved in vesicular trafficking processes. Involved in receptor-mediated endocytosis.
Storage Condition and Buffer	Rabbit IgG in phosphate buffered saline , pH 7.4, 150mM NaCl, 0.02% sodium azide and 50% glycerol. Store at +4°C short term. Store at -20°C long term. Avoid freeze / thaw cycle.

Protein Information

Images



Western blot analysis of Dynamin 1 expression in (1) SH-SY5Y cell lysate; (2) NIH/3T3 cell lysate.

Please note: All products are 'FOR RESEARCH USE ONLY. NOT FOR USE IN DIAGNOSTIC OR THERAPEUTIC PROCEDURES'.