

PDE4D Antibody

Rabbit mAb

Catalog # AP91467

Product Information

Application	WB
Primary Accession	Q08499
Reactivity	Human
Clonality	Monoclonal
Other Names	cAMP-specific 3', 5'-cyclic phosphodiesterase 4D; DPDE3; PDE43; PDE4D; DPDE3;
Isotype	Rabbit IgG
Host	Rabbit
Calculated MW	91115

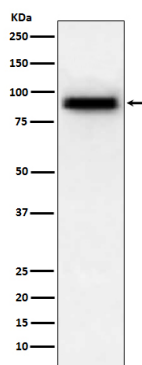
Additional Information

Dilution	WB 1:500~1:2000
Purification	Affinity-chromatography
Immunogen	A synthesized peptide derived from human PDE4D
Description	Hydrolyzes the second messenger cAMP, which is a key regulator of many important physiological processes.
Storage Condition and Buffer	Rabbit IgG in phosphate buffered saline , pH 7.4, 150mM NaCl, 0.02% sodium azide and 50% glycerol. Store at +4°C short term. Store at -20°C long term. Avoid freeze / thaw cycle.

Protein Information

Name	PDE4D (HGNC:8783)
Synonyms	DPDE3
Function	Hydrolyzes the second messenger cAMP, which is a key regulator of many important physiological processes.
Cellular Location	Apical cell membrane. Cytoplasm. Membrane. Cytoplasm, cytoskeleton. Cytoplasm, cytoskeleton, microtubule organizing center, centrosome Note=Found in the soluble fraction, associated with membranes, and associated with the cytoskeleton and the centrosome (By similarity) Colocalized with SHANK2 to the apical membrane of colonic crypt cells
Tissue Location	Expressed in colonic epithelial cells (at protein level). Widespread; most abundant in skeletal muscle [Isoform 8]; Detected in brain, placenta, lung and kidney.

Images



Western blot analysis of PDE4D expression in human fetal heart lysate.

Please note: All products are 'FOR RESEARCH USE ONLY. NOT FOR USE IN DIAGNOSTIC OR THERAPEUTIC PROCEDURES'.