

Dynein intermediate chain 1 Antibody

Rabbit mAb

Catalog # AP91461

Product Information

Application	WB
Primary Accession	Q9UI46
Reactivity	Rat, Human, Mouse
Clonality	Monoclonal
Other Names	DNAI1; ICS; Immotile cilia syndrome 1; ICS1; CILD1; PCD;
Isotype	Rabbit IgG
Host	Rabbit
Calculated MW	79283

Additional Information

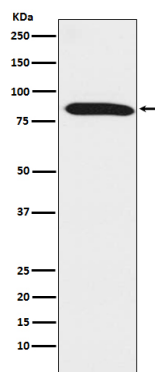
Dilution	WB 1:500~1:2000
Purification	Affinity-chromatography
Immunogen	A synthesized peptide derived from human Dynein intermediate chain 1
Description	Part of the dynein complex of respiratory cilia.
Storage Condition and Buffer	Rabbit IgG in phosphate buffered saline , pH 7.4, 150mM NaCl, 0.02% sodium azide and 50% glycerol. Store at +4°C short term. Store at -20°C long term. Avoid freeze / thaw cycle.

Protein Information

Name	DNAI1
Function	Part of the dynein complex of respiratory cilia.
Cellular Location	Dynein axonemal particle. Cytoplasm, cytoskeleton, cilium axoneme
Tissue Location	Expressed in respiratory ciliated cells (at protein level).

Images

Western blot analysis of Dynein intermediate chain 1 expression in mouse testis lysate.



Please note: All products are 'FOR RESEARCH USE ONLY. NOT FOR USE IN DIAGNOSTIC OR THERAPEUTIC PROCEDURES'.