

Follistatin Antibody

Rabbit mAb

Catalog # AP91458

Product Information

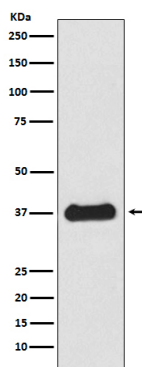
Application	WB
Primary Accession	P19883
Reactivity	Rat, Human
Clonality	Monoclonal
Other Names	Activin binding protein; Follistatin; FS; fst; Human follistatin gene;
Isotype	Rabbit IgG
Host	Rabbit
Calculated MW	38 KDa

Additional Information

Dilution	WB 1:500~1:2000
Purification	Affinity-chromatography
Immunogen	A synthesized peptide derived from human Follistatin
Description	Binds directly to activin and functions as an activin antagonist. Specific inhibitor of the biosynthesis and secretion of pituitary follicle stimulating hormone (FSH).
Storage Condition and Buffer	Rabbit IgG in phosphate buffered saline , pH 7.4, 150mM NaCl, 0.02% sodium azide and 50% glycerol. Store at +4°C short term. Store at -20°C long term. Avoid freeze / thaw cycle.

Protein Information

Images



Western blot analysis of Follistatin expression in HepG2 cell lysate.

Please note: All products are 'FOR RESEARCH USE ONLY. NOT FOR USE IN DIAGNOSTIC OR THERAPEUTIC PROCEDURES'.