

Chromogranin B Antibody

Rabbit mAb

Catalog # AP91452

Product Information

Application	WB
Primary Accession	P05060
Reactivity	Rat, Human, Mouse
Clonality	Monoclonal
Other Names	CCB peptide; CgB; Chgb; ChromograninB; SCG1; Secretogranin 1; Secretogranin B; SgI;
Isotype	Rabbit IgG
Host	Rabbit
Calculated MW	78276

Additional Information

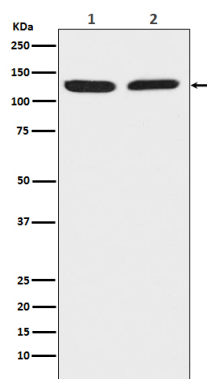
Dilution	WB 1:500~1:2000
Purification	Affinity-chromatography
Immunogen	A synthesized peptide derived from human Chromogranin B
Description	Secretogranin-1 is a neuroendocrine secretory granule protein, which may be the precursor for other biologically active peptides.
Storage Condition and Buffer	Rabbit IgG in phosphate buffered saline , pH 7.4, 150mM NaCl, 0.02% sodium azide and 50% glycerol. Store at +4°C short term. Store at -20°C long term. Avoid freeze / thaw cycle.

Protein Information

Name	CHGB
Synonyms	SCG1
Function	Secretogranin-1 is a neuroendocrine secretory granule protein, which may be the precursor for other biologically active peptides.
Cellular Location	Secreted. Note=Neuroendocrine and endocrine secretory granules
Tissue Location	Detected in cerebrospinal fluid and urine (at protein level) (PubMed:25326458, PubMed:37453717). Expressed in the adrenal medulla, and in pheochromocytoma. Not expressed in liver

Images

Western blot analysis of Chromogranin B expression in



(1) HeLa cell lysate; (2) Raw 264.7 cell lysate.

Please note: All products are 'FOR RESEARCH USE ONLY. NOT FOR USE IN DIAGNOSTIC OR THERAPEUTIC PROCEDURES'.