

# Parathyroid Hormone Antibody

Rabbit mAb

Catalog # AP91447

## Product Information

<b>Application</b>	WB, IHC
<b>Primary Accession</b>	<a href="#">P01270</a>
<b>Reactivity</b>	Human
<b>Clonality</b>	Monoclonal
<b>Other Names</b>	hPTH; Parathormone; Parathyrin; Parathyroid hormone 1; Prepro PTH; Preproparathyroid hormone; PTH1; PTH1 receptor; PTH1R; PTHR1;
<b>Isotype</b>	Rabbit IgG
<b>Host</b>	Rabbit
<b>Calculated MW</b>	12861

## Additional Information

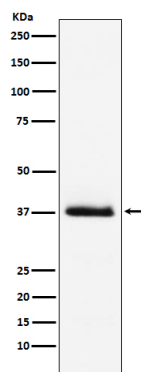
<b>Dilution</b>	WB 1:500~1:2000 IHC 1:50~1:200
<b>Purification</b>	Affinity-chromatography
<b>Immunogen</b>	A synthesized peptide derived from human Parathyroid Hormone
<b>Description</b>	PTH elevates calcium level by dissolving the salts in bone and preventing their renal excretion. Stimulates [1-14C]-2-deoxy-D-glucose (2DG) transport and glycogen synthesis in osteoblastic cells.
<b>Storage Condition and Buffer</b>	Rabbit IgG in phosphate buffered saline , pH 7.4, 150mM NaCl, 0.02% sodium azide and 50% glycerol. Store at +4°C short term. Store at -20°C long term. Avoid freeze / thaw cycle.

## Protein Information

<b>Name</b>	PTH {ECO:0000303   PubMed:35932760, ECO:0000312   HGNC:HGNC:9606}
<b>Function</b>	Parathyroid hormone elevates calcium level by dissolving the salts in bone and preventing their renal excretion (PubMed: <a href="#">11604398</a> , PubMed: <a href="#">35932760</a> ). Acts by binding to its receptor, PTH1R, activating G protein-coupled receptor signaling (PubMed: <a href="#">18375760</a> , PubMed: <a href="#">35932760</a> ). Stimulates [1-14C]-2-deoxy-D-glucose (2DG) transport and glycogen synthesis in osteoblastic cells (PubMed: <a href="#">21076856</a> ).
<b>Cellular Location</b>	Secreted

## Images

Western blot analysis of Parathyroid Hormone expression in human Parathyroid Hormone recombinant protein.



Please note: All products are 'FOR RESEARCH USE ONLY. NOT FOR USE IN DIAGNOSTIC OR THERAPEUTIC PROCEDURES'.