

# IDH2 Antibody

Rabbit mAb

Catalog # AP91435

## Product Information

<b>Application</b>	WB, IHC, FC
<b>Primary Accession</b>	<a href="#">P48735</a>
<b>Reactivity</b>	Rat, Human, Mouse
<b>Clonality</b>	Monoclonal
<b>Other Names</b>	D2HGA2; ICD-M; IDH; IDH2; IDHM; IDP; IDPM; mNADP-IDH; NADP(+)-specific ICDH; Oxalosuccinate decarboxylase;
<b>Isotype</b>	Rabbit IgG
<b>Host</b>	Rabbit
<b>Calculated MW</b>	50909

## Additional Information

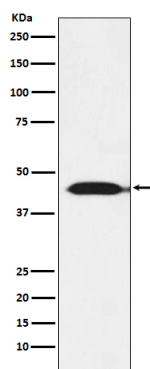
<b>Dilution</b>	WB 1:500~1:2000 IHC 1:50~1:200 FC 1:100
<b>Purification</b>	Affinity-chromatography
<b>Immunogen</b>	A synthesized peptide derived from human IDH2
<b>Description</b>	Plays a role in intermediary metabolism and energy production. It may tightly associate or interact with the pyruvate dehydrogenase complex.
<b>Storage Condition and Buffer</b>	Rabbit IgG in phosphate buffered saline , pH 7.4, 150mM NaCl, 0.02% sodium azide and 50% glycerol. Store at +4°C short term. Store at -20°C long term. Avoid freeze / thaw cycle.

## Protein Information

<b>Name</b>	IDH2
<b>Function</b>	Plays a role in intermediary metabolism and energy production (PubMed: <a href="#">19228619</a> , PubMed: <a href="#">22416140</a> ). It may tightly associate or interact with the pyruvate dehydrogenase complex (PubMed: <a href="#">19228619</a> , PubMed: <a href="#">22416140</a> ).
<b>Cellular Location</b>	Mitochondrion {ECO:0000250 UniProtKB:P33198}.

## Images

Western blot analysis of IDH2 expression in MOLT4 cell lysate.



Please note: All products are 'FOR RESEARCH USE ONLY. NOT FOR USE IN DIAGNOSTIC OR THERAPEUTIC PROCEDURES'.