

KIF3A Antibody

Rabbit mAb

Catalog # AP91418

Product Information

Application	WB, IP
Primary Accession	Q9Y496
Reactivity	Rat, Human, Mouse
Clonality	Monoclonal
Other Names	KIF 3; KIF 3A; Kifl; Kinesin family member 3A; Kinesin like protein KIF 3A; Kinesin-like protein KIF3A; Kns3;
Isotype	Rabbit IgG
Host	Rabbit
Calculated MW	80041

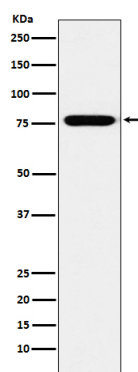
Additional Information

Dilution	WB 1:500~1:2000 IP 1:50
Purification	Affinity-chromatography
Immunogen	A synthesized peptide derived from human KIF3A
Description	Microtubule-based anterograde translocator for membranous organelles. Plus end-directed microtubule sliding activity in vitro.
Storage Condition and Buffer	Rabbit IgG in phosphate buffered saline , pH 7.4, 150mM NaCl, 0.02% sodium azide and 50% glycerol. Store at +4°C short term. Store at -20°C long term. Avoid freeze / thaw cycle.

Protein Information

Name	KIF3A
Synonyms	KIF3
Function	Microtubule-based anterograde translocator for membranous organelles. Plus end-directed microtubule sliding activity in vitro. Plays a role in primary cilia formation. Plays a role in centriole cohesion and subdistal appendage organization and function. Regulates the formation of the subdistal appendage via recruitment of DCTN1 to the centriole. Also required for ciliary basal feet formation and microtubule anchoring to mother centriole.
Cellular Location	Cytoplasm, cytoskeleton. Cell projection, cilium {ECO:0000250 UniProtKB:P28741}. Cytoplasm, cytoskeleton, microtubule organizing center, centrosome, centriole. Note=Localizes to the subdistal appendage region of the centriole.

Images



Western blot analysis of KIF3A expression in SH-SY5Y cell lysate.

Please note: All products are 'FOR RESEARCH USE ONLY. NOT FOR USE IN DIAGNOSTIC OR THERAPEUTIC PROCEDURES'.