

ADORA1 Antibody

Rabbit mAb

Catalog # AP91414

Product Information

Application	WB, IHC, IF, FC, ICC, IP, IHF
Primary Accession	P30542
Reactivity	Human
Clonality	Monoclonal
Other Names	A1AR; A1R; AA1R; Adenosine receptor A1; ADORA 1; ADORA1; RDC 7; Ri;
Isotype	Rabbit IgG
Host	Rabbit
Calculated MW	36512

Additional Information

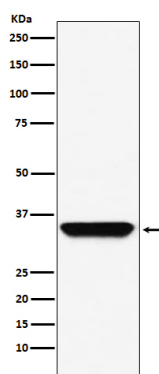
Dilution	WB 1:500~1:2000 IHC 1:50~1:200 ICC/IF 1:50~1:200 IP 1:50 FC 1:100
Purification	Affinity-chromatography
Immunogen	A synthesized peptide derived from human ADORA1
Description	Receptor for adenosine. The activity of this receptor is mediated by G proteins which inhibit adenylyl cyclase.
Storage Condition and Buffer	Rabbit IgG in phosphate buffered saline , pH 7.4, 150mM NaCl, 0.02% sodium azide and 50% glycerol. Store at +4°C short term. Store at -20°C long term. Avoid freeze / thaw cycle.

Protein Information

Name	ADORA1
Function	Receptor for adenosine. The activity of this receptor is mediated by G proteins which inhibit adenylyl cyclase.
Cellular Location	Cell membrane; Multi-pass membrane protein

Images

Western blot analysis of ADORA1 expression in A549 cell lysate.



Please note: All products are 'FOR RESEARCH USE ONLY. NOT FOR USE IN DIAGNOSTIC OR THERAPEUTIC PROCEDURES'.