

RBP4 Antibody

Rabbit mAb

Catalog # AP91409

Product Information

Application	WB, IHC, IF, FC, ICC, IHF
Primary Accession	P02753
Reactivity	Human
Clonality	Monoclonal
Other Names	PRBP; PRO2222; RBP; RBP4; RDCCAS;
Isotype	Rabbit IgG
Host	Rabbit
Calculated MW	23010

Additional Information

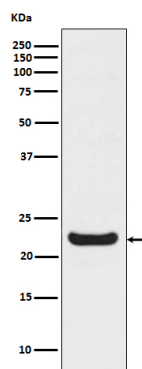
Dilution	WB 1:1000~1:5000 IHC 1:50~1:200 ICC/IF 1:50~1:200 FC 1:50
Purification	Affinity-chromatography
Immunogen	A synthesized peptide derived from human RBP4
Description	Delivers retinol from the liver stores to the peripheral tissues. In plasma, the RBP-retinol complex interacts with transthyretin, this prevents its loss by filtration through the kidney glomeruli.
Storage Condition and Buffer	Rabbit IgG in phosphate buffered saline , pH 7.4, 150mM NaCl, 0.02% sodium azide and 50% glycerol. Store at +4°C short term. Store at -20°C long term. Avoid freeze / thaw cycle.

Protein Information

Name	RBP4
Function	Retinol-binding protein that mediates retinol transport in blood plasma (PubMed: 5541771). Delivers retinol from the liver stores to the peripheral tissues (Probable). Transfers the bound all-trans retinol to STRA6, that then facilitates retinol transport across the cell membrane (PubMed: 22665496).
Cellular Location	Secreted
Tissue Location	Detected in blood plasma and in urine (at protein level).

Images

Western blot analysis of RBP4 expression in HepG2 cell lysate.



Please note: All products are 'FOR RESEARCH USE ONLY. NOT FOR USE IN DIAGNOSTIC OR THERAPEUTIC PROCEDURES'.