

BST2 Antibody

Rabbit mAb

Catalog # AP91397

Product Information

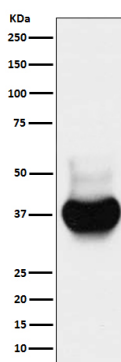
| | |
|--------------------------|--|
| Application | WB, IHC, FC |
| Primary Accession | Q10589 |
| Reactivity | Human |
| Clonality | Monoclonal |
| Other Names | Bone marrow stromal antigen 2; BST2; CD317; HM1.24 antigen; NPC A 7; Tetherin; |
| Isotype | Rabbit IgG |
| Host | Rabbit |
| Calculated MW | 28 KDa |

Additional Information

| | |
|-------------------------------------|---|
| Dilution | WB 1:500~1:2000 IHC 1:50~1:200 FC 1:50 |
| Purification | Affinity-chromatography |
| Immunogen | A synthesized peptide derived from human BST2 |
| Description | May be involved in the sorting of secreted proteins (By similarity). May be involved in pre-B-cell growth. Antiretroviral defense protein, that blocks release of retrovirus from the cell surface. |
| Storage Condition and Buffer | Rabbit IgG in phosphate buffered saline , pH 7.4, 150mM NaCl, 0.02% sodium azide and 50% glycerol. Store at +4°C short term. Store at -20°C long term. Avoid freeze / thaw cycle. |

Protein Information

Images



Western blot analysis of BST2 expression in HeLa cell lysate.

Please note: All products are 'FOR RESEARCH USE ONLY. NOT FOR USE IN DIAGNOSTIC OR THERAPEUTIC PROCEDURES'.