

# INDO Antibody

Rabbit mAb

Catalog # AP91395

## Product Information

---

<b>Application</b>	WB, IF, ICC
<b>Primary Accession</b>	<a href="#">P14902</a>
<b>Reactivity</b>	Human
<b>Clonality</b>	Monoclonal
<b>Other Names</b>	3-dioxygenase; IDO 1; IDO; IDO1; INDO; indolamine 2, 3 dioxygenase; Indole 2 3 dioxygenase;
<b>Isotype</b>	Rabbit IgG
<b>Host</b>	Rabbit
<b>Calculated MW</b>	45326

## Additional Information

---

<b>Dilution</b>	WB 1:500~1:2000 ICC/IF 1:50~1:200
<b>Purification</b>	Affinity-chromatography
<b>Immunogen</b>	A synthesized peptide derived from human INDO
<b>Description</b>	Catalyzes the cleavage of the pyrrol ring of tryptophan and incorporates both atoms of a molecule of oxygen.
<b>Storage Condition and Buffer</b>	Rabbit IgG in phosphate buffered saline , pH 7.4, 150mM NaCl, 0.02% sodium azide and 50% glycerol. Store at +4°C short term. Store at -20°C long term. Avoid freeze / thaw cycle.

## Protein Information

---

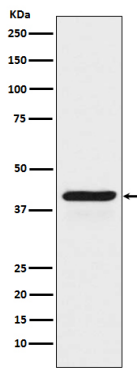
<b>Name</b>	IDO1 ( <a href="#">HGNC:6059</a> )
<b>Synonyms</b>	IDO, INDO
<b>Function</b>	Catalyzes the first and rate limiting step of the catabolism of the essential amino acid tryptophan along the kynurenine pathway (PubMed: <a href="#">17671174</a> , PubMed: <a href="#">18026683</a> ). Involved in the peripheral immune tolerance, contributing to maintain homeostasis by preventing autoimmunity or immunopathology that would result from uncontrolled and overreacting immune responses (PubMed: <a href="#">25691885</a> ). Tryptophan shortage inhibits T lymphocytes division and accumulation of tryptophan catabolites induces T-cell apoptosis and differentiation of regulatory T-cells (PubMed: <a href="#">25691885</a> ). Acts as a suppressor of anti-tumor immunity (PubMed: <a href="#">14502282</a> , PubMed: <a href="#">23103127</a> , PubMed: <a href="#">25157255</a> , PubMed: <a href="#">25691885</a> ). Limits the growth of intracellular pathogens by depriving tryptophan (PubMed: <a href="#">25691885</a> ). Protects the fetus from maternal immune rejection (PubMed: <a href="#">25691885</a> ).
<b>Cellular Location</b>	Cytoplasm, cytosol {ECO:0000250 UniProtKB:P28776,

## Tissue Location

Expressed in mature dendritic cells located in lymphoid organs (including lymph nodes, spleen, tonsils, Peyers's patches, the gut lamina propria, and the thymic medulla), in some epithelial cells of the female genital tract, as well as in endothelial cells of term placenta and in lung parenchyma (PubMed:25691885). Weakly or not expressed in most normal tissues, but mostly inducible in most tissues (PubMed:25691885). Expressed in more than 50% of tumors, either by tumoral, stromal, or endothelial cells (expression in tumor is associated with a worse clinical outcome) (PubMed:18418598). Not overexpressed in tumor-draining lymph nodes (PubMed:25691885, PubMed:26155395).

## Images

---



Western blot analysis of INDO expression in HeLa cell lysate treated with IFN gamma.

Please note: All products are 'FOR RESEARCH USE ONLY. NOT FOR USE IN DIAGNOSTIC OR THERAPEUTIC PROCEDURES'.