

ORM1 Antibody

Rabbit mAb

Catalog # AP91394

Product Information

| | |
|--------------------------|---|
| Application | WB, IHC |
| Primary Accession | P02763 |
| Reactivity | Human |
| Clonality | Monoclonal |
| Other Names | AGP 1; AGP A; AGP1; Alpha 1 acid glycoprotein; alpha-1-AGP; HEL S 153w; ORM; Orosomucoid 1; |
| Isotype | Rabbit IgG |
| Host | Rabbit |
| Calculated MW | 23540 |

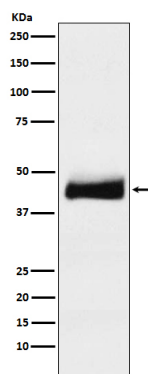
Additional Information

| | |
|-------------------------------------|---|
| Dilution | WB 1:500~1:2000 IHC 1:50~1:200 |
| Purification | Affinity-chromatography |
| Immunogen | A synthesized peptide derived from human ORM1 |
| Description | Appears to function in modulating the activity of the immune system during the acute-phase reaction. |
| Storage Condition and Buffer | Rabbit IgG in phosphate buffered saline , pH 7.4, 150mM NaCl, 0.02% sodium azide and 50% glycerol. Store at +4°C short term. Store at -20°C long term. Avoid freeze / thaw cycle. |

Protein Information

| | |
|--------------------------|--|
| Name | ORM1 |
| Synonyms | AGP1 |
| Function | Functions as a transport protein in the blood stream. Binds various ligands in the interior of its beta-barrel domain. Also binds synthetic drugs and influences their distribution and availability in the body. Appears to function in modulating the activity of the immune system during the acute-phase reaction. |
| Cellular Location | Secreted. |
| Tissue Location | Expressed by the liver and secreted in plasma. |

Images



Western blot analysis of ORM1 expression in human testis lysate.

Please note: All products are 'FOR RESEARCH USE ONLY. NOT FOR USE IN DIAGNOSTIC OR THERAPEUTIC PROCEDURES'.