

SERPINC1 Antibody

Rabbit mAb

Catalog # AP91390

Product Information

Application	WB, IF, ICC
Primary Accession	P01008
Reactivity	Human
Clonality	Monoclonal
Other Names	Antithrombin; Antithrombin III; AT 3; AT III; AT3; AT3D; ATIII; Heparin cofactor I; Serpin C1; Serpin family C member 1; SERPINC1; THPH7;
Isotype	Rabbit IgG
Host	Rabbit
Calculated MW	52602

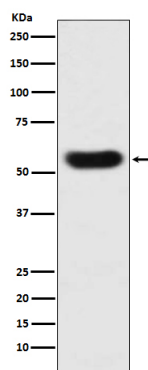
Additional Information

Dilution	WB 1:500~1:2000 ICC/IF 1:50~1:200
Purification	Affinity-chromatography
Immunogen	A synthesized peptide derived from human SERPINC1
Description	Most important serine protease inhibitor in plasma that regulates the blood coagulation cascade. AT-III inhibits thrombin as well as factors IXa, Xa and XIa. Its inhibitory activity is greatly enhanced in the presence of heparin.
Storage Condition and Buffer	Rabbit IgG in phosphate buffered saline , pH 7.4, 150mM NaCl, 0.02% sodium azide and 50% glycerol. Store at +4°C short term. Store at -20°C long term. Avoid freeze / thaw cycle.

Protein Information

Name	SERPINC1
Synonyms	AT3
Function	Most important serine protease inhibitor in plasma that regulates the blood coagulation cascade (PubMed: 15140129 , PubMed: 15853774). AT-III inhibits thrombin, matriptase-3/TMPRSS7, as well as factors IXa, Xa and XIa (PubMed: 15140129). Its inhibitory activity is greatly enhanced in the presence of heparin.
Cellular Location	Secreted, extracellular space.
Tissue Location	Found in plasma.

Images



Western blot analysis of SERPINC1 expression in human plasma lysate.

Please note: All products are 'FOR RESEARCH USE ONLY. NOT FOR USE IN DIAGNOSTIC OR THERAPEUTIC PROCEDURES'.